

NSOS

CHAUVET **2**

2020



“The CHAUVET name and logo and the other brands and trademarks in this catalog, including, but not limited to, CHAUVET DJ, VIVID, INTIMIDATOR, FREEDOM, EVE, SLIMPAR, SLIMPANEL, COLORBAND, COREPAR, BTAIR, EZLINK, D-FI, D-FI USB, GIGBAR, HURRICANE, GEYSER, NIMBUS, CUMULUS, FUNFETTI, SCORPION, SWARM, ROTOSPHERE, LINE DANCER, KINTA, ABYSS, FLARECON, OBEY and FOOT-C are registered trademarks or trademarks owned by CHAUVET in the U.S. and other countries and may not be used by a third party for any purpose without the prior written consent of CHAUVET.”

For complete specifications, visit ChauvetDJ.eu | All products meet CSA and CE standards. Specifications subject to change without notice.

Table of Contents



VIDEO PANELS

Vivid 4	5
Vivid Drive 28N	5



MOVING HEADS & SCANNERS

Intimidator Hybrid 140SR	7
Intimidator Spot 475Z	7
Intimidator Spot 375Z	7
Intimidator Spot 360	8
Intimidator Spot 260	8
NEW Intimidator Spot 160	9
Intimidator Spot 110	9
Intimidator Beam 355	10
Intimidator Wash Zoom 450	10
Intimidator Scan 305	11
Intimidator Scan 110	11



BATTERY & WIRELESS DMX

Freedom Par Hex-4	14
Freedom Flex H4 IP	14
Freedom Flex Battery	14
Freedom Par Quad-4 IP	14
Freedom Par Tri-6	15
Freedom H1	15
NEW Freedom Q1N	15
NEW Freedom Centerpiece	16
NEW Freedom Cyc	16
NEW Freedom Wedge Quad	17
NEW Freedom Gobo IP	17
Freedom Stick	17
Freedom Stick Pack	17



EXTERIOR

Freedom Par Quad-4 IP	19
Freedom Flex H4 IP	19
NEW Festoon 2 RGB	19
NEW Festoon 2 EXT RGB	19



BLUETOOTH

BTair	26
NEW EZLink Par Q1BT	27
NEW COLORband Q3BT	27
EZLink Par Q4BT	27
EZLink Par Q6BT	28
SlimPAR Q12BT	28
SlimPAR T12BT	28
COLORband T3BT	29
4BAR LTBT	29



WASH LIGHTS

EVE E-100Z	21
EVE E-50Z	21
EVE F-50Z	21
EVE TF-20	21
EVE P-100 WW	22
EVE P-130 RGB	22
EVE P-140 VW	22
EVE P-150 UV	23
SlimPAR Pro Q USB	25
SlimPAR Pro H USB	25
NEW COLORband Q3BT	27
NEW EZLink Par Q1BT	27
EZLink Par Q4BT	27
EZLink Par Q6BT	28
SlimPAR Q12BT	28
SlimPAR T12BT	28
COLORband T3BT	29
4BAR LTBT	29
COREpar 40 USB	30
COREpar 80 USB	30
COREpar UV USB	30
COLORband PiX USB	31
COLORband PiX-M USB	31
SlimBANK T18 USB	32
SlimPAR H6 USB	32
SlimPAR Q6 USB	32
SlimPAR Q12 USB	32
SlimPAR T12 USB	33
SlimPAR T6 USB	33
SlimPAR 56	33



EFFECTS

NEW GigBAR Move	35
GigBAR 2	35
4BAR LTBT	35
NEW Festoon 2 RGB	36
NEW Festoon 2 EXT RGB	36
NEW Obsession	36
Wash FX 2	37
Swarm Wash FX	37
Swarm 5 FX	37
Rotosphere Q3	38
Mini Kinta IRC	38
Kinta FX	38
BOB LED	38



GOBO PROJECTORS

NEW Freedom Gobo IP	39
----------------------------------	----



SPOTLIGHTS

NEW Pinspot Bar	41
EZpin Pack 4	41
EZBar	41
LED Pinspot 2	41
EVE E-100Z	42

EVE E-50Z	42
LED Followspot 75ST	42
LED Followspot 120ST	42



STROBE

Shocker 2	43
-----------------	----



ATMOSPHERICS

Geyser P7	45
Funfetti Shot	45
Hurricane Haze 4D	47
Hurricane 1000	47
Hurricane 1600	47
Hurricane Haze 1DX	47
Hurricane 1200	47
Hurricane 700	47
Cumulus	48
Nimbus	48
Nimbus Cart	48
NEW Hurricane Bubble Haze	49
Bubble King (B-550)	49
Atmospheric Remotes	49
Atmospheric Fluids	49



BLACKLIGHTS

COREpar UV USB	51
EVE P-150 UV	51



CONTROLLERS

BTair	52
FlareCON	52
NEW FlareCON Air 2	52
ShowXpress	53
NEW Xpress-Rack 1024	53
NEW Xpress-1024	53
NEW Xpress-512S	53
IRC-6	56
DMX-AN 2	56
D-Fi Hub	56
Obey 70	56
Data Stream 4	56
Obey 40	56
Data Stream 8	56



ACCESSORIES

Portable Stands	57
Clamps	57
Cables	57
VIP Gear Bags	58

Vivid 4 High Quality Video Panels

Lighter, Easier.





Vivid 4

Vivid 4 is a modular video panel that vividly displays content without the need for bulky media servers. Create dazzling video displays with these lightweight video panels that feature black body LEDs that accurately reproduce high-contrast videos. Vivid 4 makes a perfect DJ façade and seamlessly integrates with Serato for displaying music videos to add gig excitement. Setup is easy and fast with multiple magnets and positioning pins that make getting up and running tool-free and effortless. Stellar reliability and quality are built into Vivid 4. Dual power supplies ensure downstream panels don't lose signal. Intelligent modules with dedicated memory improve the image quality and simplify maintenance. Panels can be suspended vertically or horizontally, offering different aspect ratio options. Multiple Speego connectors mean Vivid 4 sets up twice as fast as other panels.

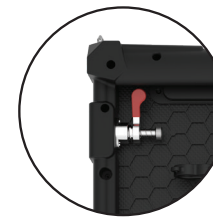
- Light Source: 21,632 SMD 2020 LEDs (tri-colour RGB) 0.3 W, (60 mA), 50,000 hours
- Wavelength: 620 to 625 nm red, 516 to 530 nm green, 460 to 475 nm blue
- Viewing Angle: 120°
- Maximum Illuminance: 1,200 NITS
- Calibrated Illuminance: 1,000 NITS
- Contrast Ratio: 4,300:1
- Refresh Rate: 1,920 Hz
- Pixel Density: 43,264 m² (104 x 208)
- Pixel Pitch: 4.8 mm
- Minimum Viewing Distance: 12 ft (4 m)
- Control Protocol: Novastar
- Power I/O Connectors: Seetronic® powerKON®
- Signal I/O Connectors: Seetronic® etherKON®
- Power Linking: 7 units @ 120 V; 13 units @ 230 V
- Input Voltage: 100 to 240 VAC, 50/60 Hz (auto-ranging)
- Power and Current: 280 W, 2.3 A @ 120 V, 60 Hz
- Power and Current: 280 W, 1.2 A @ 230 V, 50 Hz
- Weight: 12.5 kg (27.6 lbs)
- Size: 500 x 65 x 1000 mm (19.7 x 1.9 x 39.4 in)
- Maximum Vertical Hang: 23 panels
- Maximum Horizontal Hang: 17 panels
- Required Controllers: Vivid Drive 28N
- Optional Accessories: DRBF50CM, DRBF100CM, DRBCURVEKIT 2, VIDCURVEKIT, GROUND SUPPORT 2KIT



Available DRBF50CM and DRBF100CM Mounting Rig Bars, DRBCURVEKIT 2, VIDCURVEKIT, and GROUND SUPPORT 2KIT



Multiple magnets and positioning pins effortlessly allow a tool free, one-person setup



Elongated side with multiple Speego connectors sets up 2x faster than other panels



Extremely lightweight due to the magnesium die-cast housing



Included Seetronic® powerKON® and Seetronic® etherKON® Cables



Vivid Drive 28N

Vivid Drive 28N is an easy-to-use video driver for CHAUVET DJ Vivid video panels or any Novastar video panel. No computer needed! Vivid Drive 28N features powerful standalone mapping and a built-in video scaler for quick resizing of video content. Numerous input/output options are on board as well as backlit buttons for easy viewing in dark environments. The front knob can be set to control the master dimmer and you can seamlessly transition between different inputs with multiple transition effects. Compact 1U packing eases transportation and integration into your existing setup.

- Rackmount: 1U
- Control Protocol: Novastar
- Control Input Connectors: USB, RJ45
- Video Input Connectors: HDMI, Display Port, DVI, VGA (x3), CVBS (x2)
- Video Output Connector: DVI, VGA, RJ45 (x2)
- Max. Supported LEDs: 1,310,720
- Max. Supported Panels (Vivid 4): 30 per RJ45
- Max. Supported Resolution: 1920 x 1080
- Input Voltage: 100 to 240 VAC, 50/60 Hz (auto-ranging)
- Power and Current: 42 W, 0.7 A @ 120 V, 60 Hz
- Power and Current: 42 W, 0.4 A @ 230 V, 50 Hz
- Weight: 2.2 kg (4.8 lbs)
- Dimensions: 483 x 305 x 44 mm (19 x 12 x 1.7 in)

Intimidator Series

Moving Lights. Moving People.

moving heads



Optional IRC-6 Remote



Intimidator Hybrid 140SR

Intimidator Hybrid 140SR is a true hybrid moving head that is an all-in-one light fixture that transforms from SPOT to BEAM to WASH effortlessly. It is fitted with an intense 140 W discharge light engine and can create dynamic beam effects with dual overlapping, independently controlled prisms. Dual gobo wheels allow for gobo morphing and amazing mid-air projections and the motorised zoom works in beam, spot and wash modes for ultimate light control. The glass optics of Intimidator Hybrid 140SR ensures crisp beams and gobos.

- DMX Channels: 13 or 19
- Light Source (included): Osram Sirius HRI 140 W discharge lamp, 6,000 hours
- Zoom Angle Motorised (beam): 3° to 11° (spot): 7° to 21° (wash): 14° to 28°
- Gobo Wheel (1): 9 + open, rotating, indexing, interchangeable, slot-n-lock, continuous scroll at variable speeds
- Gobo Wheel (2): 17 + open, aluminum, continuous scroll at variable speeds
- Colours: 12 + white, split colours, continuous scroll at variable speeds
- Prism (1): 8-facet round, bidirectional rotation at variable speeds
- Prism (2): 6-facet linear, bidirectional rotation at variable speeds
- Illuminance (3° beam): 382,000 lux @ 5 m
- Illuminance (7° spot): 104,700 lux @ 5 m
- Illuminance (14° wash): 4,680 lux @ 5 m
- Input Voltage: 100 to 240 VAC, 50/60 Hz (auto-ranging)
- Weight: 15.2 kg (33.4 lbs)
- Size: 322 x 220 x 513 mm (12.6 x 8.6 x 20.2 in)



Gobo Wheel 1



Gobo Wheel 2



Colours



Optional IRC-6 Remote



Intimidator Spot 475Z

Intimidator Spot 475Z is a powerful moving head designed for spotlighting large events. This fixture can adapt to short-throw or long-throw situations, courtesy of its motorised zoom. Achieve incredible visual effects with dual rotating prisms which split the beam, creating dramatic displays. It also comes equipped with dual gobo wheels for gobo morphing and amazing mid-air projections! This feature-packed powerhouse utilises motorised focus to channel crisp projections at almost any distance. Beams stay where you want them with built-in Totem mode. It has powerCON®-compatible power input/output connections for power linking.

- DMX Channels: 10 or 16
- Light Source: 1 LED (white) 250 W, (16.3 A), 50,000 hours
- Colours: 7 + white, split colours, continuous scroll at variable speeds
- Gobos wheel (1): 7 + open (6 metal + 1 glass), rotating, interchangeable, indexing, continuous scroll at variable speeds
- Gobo wheel (2): 8 + open, continuous scroll at variable speeds
- Prism (1): 6-facet round, bidirectional rotation at variable speeds
- Prism (2): 6-facet linear, bidirectional rotation at variable speeds
- Zoom Angle (motorised): 13° to 28°
- Illuminance (13°): 106,300 lux @ 2 m
- Illuminance (28°): 23,680 lux @ 2 m
- Input Voltage: 100 to 240 VAC, 50/60 Hz (auto-ranging)
- Weight: 16.5 kg (36.2 lbs)
- Size: 363 x 250 x 531 mm (14.3 x 9.8 x 20.9 in)



Gobo Wheel 1



Gobo Wheel 2



Colours



Optional IRC-6 Remote



MSR
Best Lighting Product
of 2017



Intimidator Spot 375Z

Intimidator Spot 375Z is an exceptionally bright, 150 W LED moving head spot designed for large events. It features motorised zoom for short or long-throw applications. Dual rotating prisms split the beam for great effects and to cover a larger area. The motorised focus ensures crisp projections at almost any distance and the built-in Totem mode keeps the beams exactly where you want them. Intimidator Spot 375Z includes built-in, automated and sound-activated programs or it can be controlled in DMX or master/slave mode. PowerCON®-compatible power input/output connections for power linking are also onboard.

- DMX Channels: 9 or 15
- Light Source: 1 LED (white) 150 W, (12.3 A), 50,000 hours
- Zoom Angle (motorised): 10° to 23°
- Colours: 7 + white, split colours, continuous scroll at variable speeds
- Gobos: 7 + open (6 aluminum + 1 glass), rotating, interchangeable, indexing, slot-n-lock, continuous scroll at variable speeds
- Gobo Size: 24 mm outside, 20 mm image, 1 mm max. thickness
- Prism (1): 6-facet round, bidirectional rotation at variable speeds
- Prism (2): 5-facet linear, bidirectional rotation at variable speeds
- Illuminance (10°): 38,000 lux @ 2 m / (23°): 19,850 lux @ 2 m
- Input Voltage: 100 to 240 VAC, 50/60 Hz (auto-ranging)
- Weight: 12.4 kg (27.2 lbs)
- Size: 220 x 322 x 466 mm (8.6 x 12.7 x 18.3 in)



Gobos



Colours





Optional IRC-6 Remote



Optional IRC-6 Remote



Intimidator Spot 360

Intimidator Spot 360 is a 100 W LED packed with mobile event lighting power. Dual rotating prisms are on board to split the beam and cover a larger area with Intimidator Spot 360's impressive visuals. Throw light even farther by decreasing the beam angle 5° using the manual zoom. Motorised focus gives you the ability to create sharp gobo patterns from almost any distance and Totem mode lets you keep the beams forward. Intimidator Spot 360 lets you set, save, and recall 1 scene manually, directly from the full-colour LCD display. Intimidator Spot 360 uses powerCON®-compatible power input/output connections for power linking.

- DMX Channels: 8 or 14
- Light Source: 1 LED (white) 100 W, (3.2 A), 50,000 hours
- Colours: 8 + white, split colours, continuous scroll at variable speeds
- Gobos: 7 + open (6 metal + 1 glass), rotating, interchangeable, indexing, slot-n-lock, continuous scroll at variable speeds
- Gobo Size: 24 mm outside, 20 mm image, 1.1 mm max thickness
- Prism (1): 3-facet round, bidirectional rotation at variable speeds
- Prism (2): 5-facet linear, bidirectional rotation at variable speeds
- Zoom Angle (manual): 12° to 17°
- Illuminance (12°): 35,010 lux @ 2 m
- Illuminance (17°): 19,710 lux @ 2 m
- Input Voltage: 100 to 240 VAC, 50/60 Hz (auto-ranging)
- Weight: 11.4 kg (25 lbs)
- Size: 423 x 322 x 297 mm (16.65 x 12.68 x 11.69 in)



Gobos



Colours



Intimidator Spot 260

Give your mobile performances some lighting punch with the feature-packed Intimidator Spot 260. It features a 75W LED and motorised focus that lets you project crisp gobos from nearly any distance. Throw light farther by decreasing the beam angle 5° using the manual zoom. Keep the party energised using Totem mode that keeps beams on the dance floor and a 3-facet prism splits the beam and covers a larger area to thrill event guests. Intimidator Spot 260 lets you set, save, and recall 1 scene manually, directly from the full-colour LCD display. Link up to 4 fixtures to create eye-catching, synchronised shows in Automated or Sound mode. You can also use convenient, wireless non-DMX control using the optional IRC-6 remote. Intimidator Spot 260 has powerCON®-compatible power input/output connections for power linking. Fits best in the CHS-2XX VIP Gear Bag.

- DMX Channels: 8 or 14
- Light Source: 1 LED (white) 75 W, (3.3 A), 50,000 hours
- Colours: 8 + white, split colours, continuous scroll at variable speeds
- Gobos: 7 + open (6 metal + 1 glass), rotating, interchangeable, slot-n-lock, continuous scroll at variable speeds
- Gobo Size: 24 mm outside, 20 mm image, 1.1 mm max thickness
- Prism: 3-facet round, static
- Zoom Angle (manual): 12° to 17°
- Illuminance (12°): 12,030 lux @ 2 m
- Illuminance (17°): 2,530 lux @ 2 m
- Input Voltage: 100 to 240 VAC, 50/60 Hz (auto-ranging)
- Weight: 5.6 kg (12.2 lbs)
- Size: 232 x 163 x 351 mm (9.1 x 6.4 x 13.8 in)



Gobos



Colours



NEW



Optional IRC-6 Remote



Intimidator Spot 160

Intimidator Spot 160 is the epitome of compact moving head power. This feature-packed moving head is designed for mobile performances with CHAUVET DJ's innovative built-in Totem mode, keeping beams focused on the dance floor. One scene can be set, saved, and recalled manually from the full-colour LCD display. A convenient ¼-turn hanging bracket allows for quick removal when needed, and up to 4 fixtures can be linked to create eye-catching, synchronised shows in Automated or Sound mode. Wireless non-DMX control is possible using the optional IRC-6 remote.



- DMX Channels: 5 or 11
- Light Source: 1 LED (cool white) 32 W, (2.3 A), 50,000 hours
- Beam Angle: 17°
- Colours: 9 + open, split colours, continuous scroll at variable speeds
- Gobos: 9 + open (9 aluminum), continuous scroll at variable speeds
- Illuminance: 6,080 lux @ 2 m
- Input Voltage: 100 to 240 VAC, 50/60 Hz (auto-ranging)
- Weight: 4.0 kg (8.8 lbs)
- Size: 207 x 149 x 308 mm (8.2 x 5.9 x 12 in)

Gobos



Colours

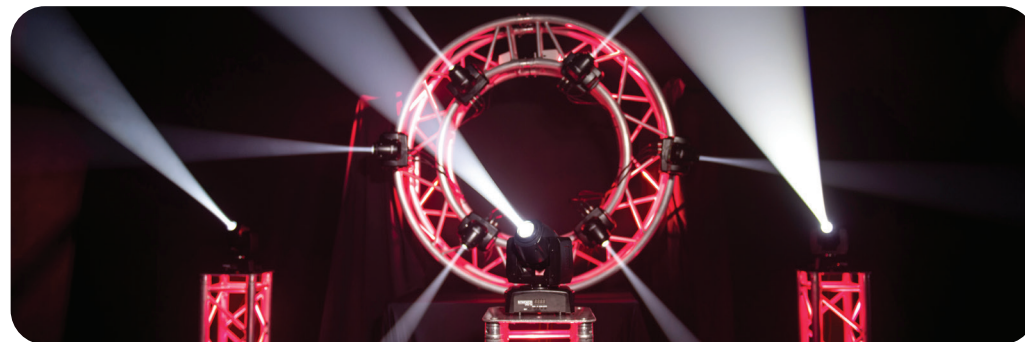


Optional IRC-6 Remote



Intimidator Spot 110

Small but mighty, the compact Intimidator Spot 110 is a lightweight LED moving head perfect for modest mobile applications. It features separate colour and gobo wheels for creative programming but also easy-to-use sound-activated programs for dynamic light shows to sync to the music. Built-in automated programs are also on board the Intimidator Spot 110 and it's easy to generate a synchronised show in Master/Slave mode. Convenient, wireless non-DMX control is available using the optional IRC-6 remote. Fits best in the CHS-40 VIP gear bag.



- DMX Channels: 6 or 12
- Light Source: 1 LED (cool white) 10 W, (2.1 A), 50,000 hours
- Beam Angle: 13°
- Gobos: 7 + open, continuous scroll at variable speeds
- Colours: 7 + white, continuous scroll at variable speeds
- Illuminance: 1,561 lux @ 2 m
- Input Voltage: 100 to 240 VAC, 50/60 Hz (auto-ranging)
- Weight: 2.3 kg (5.0 lbs)
- Size: 190 x 127 x 279 mm (7.5 x 5 x 11 in)



Gobos



Colours





Optional IRC-6 Remote



Intimidator Beam 355

Intimidator Beam 355 is a powerful and feature-packed moving head beam fitted with a 100 W LED. Easily generate complex looks using the fixed gobo wheel that includes a unique animation effect to create additional dramatic looks. A rotating 3-facet prism splits the beam to cover larger areas. The motorised frost filter converts the beam to a wash. The onboard full-colour display is IRC-6 compatible and features Totem mode and onboard memory for storing a scene. Intimidator Beam 355 has powerCON®-compatible power input/output connections for power linking.



Photo by: MKDevo

- DMX Channels: 8 or 14
- Light Source: 1 LED (white) 100 W, (27 A), 50,000 hours
- Beam Angle: 3°
- Gobos: 5 + open, animation effect, continuous scroll at variable speeds
- Colours: 8 + white, split colours, continuous scroll at variable speeds
- Prism: 3-facet round, bidirectional rotation at variable speeds
- Illuminance: 262,800 lux @ 2 m
- Input Voltage: 100 to 240 VAC, 50/60 Hz (auto-ranging)
- Weight: 11.6 kg (25.4 lbs)
- Size: 322 x 220 x 480 mm (12.7 x 8.7 x 18.9 in)



Gobos



Colours



Optional IRC-6 Remote



Intimidator Wash Zoom 450

Intimidator Wash Zoom 450 is a powerful moving head wash fitted with twelve 25 W quad-colour RGBW LEDs and a motorised zoom for short or long-throw applications. Other convenient features include a Totem mode that keeps beams aimed at the dance floor and eye-catching auto programs with zone control. Wireless (non-DMX) control is possible using the optional IRC-6 remote. Up to four fixtures can be linked to create synchronised shows in automated, sound and master/slave modes.



- DMX Channels: 14 or 29
- Light Source: 12 LEDs (quad-colour RGBW) 20 W (3.7 A), 50,000 hours
- Zoom Angle (motorised): 7° to 34°
- Illuminance (7°): 21,560 lux @ 2 m
- Illuminance (34°): 2,320 lux @ 2 m
- Input Voltage: 100 to 240 VAC, 50/60 Hz (auto-ranging)
- Power and Current: 219 W, 1.9 A @ 120 V, 60 Hz
- Power and Current: 207 W, 1 A @ 230 V, 50 Hz
- Weight: 7.2 kg (15.8 lbs)
- Size: 194 x 277 x 363 mm (7.6 x 10.9 x 14.3 in)





Optional IRC-6 Remote



Intimidator Scan 305

Intimidator Scan 305 features a bright 60 W LED and a crisp 3-facet prism that allows you to split the beam and cover larger areas. Link up to four fixtures to create synchronised shows in automated, sound or master/slave mode. Save time running cables and extension cords. Minimise programming time using built-in movement macros and move-in-black features. For easy non-DMX operation, control it with the optional IRC-6 remote. Fits best in the CHS-40 VIP Gear Bag.



- DMX Channels: 7 or 11
- Light Source: 1 LED (white) 60 W (2.3 A), 50,000 hours
- Beam Angle: 15°
- Gobos: 7 + open (5 metal + 2 glass), rotating, interchangeable, slot-n-lock, continuous scroll at variable speeds
- Gobo Size: 23.9 mm outside, 20.5 mm image, 1 mm max. thickness
- Colours: 8 + white, split colours, continuous scroll at variable speeds
- Prism: 3-facet round, static
- Illuminance: 9,110 lux @ 2 m
- Input Voltage: 100 to 240 VAC, 50/60 Hz (auto-ranging)
- Weight: 4.6 kg (10 lbs)
- Size: 430 x 255 x 147 mm (16.9 x 10 x 5.7 in)



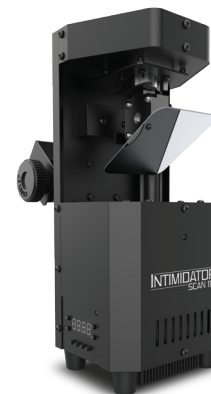
Gobos



Colours



Optional IRC-6 Remote



Intimidator Scan 110

Small and mighty moving beam power! Intimidator Scan 110 is an extremely compact and lightweight LED scanner perfect for mobile applications. Energise any dance floor with fast and precise movements using either sound-activated programs that dance to the beat of the music or convenient, wireless non-DMX control using an optional IRC-6 remote. Intimidator Scan 110 is a time saver too! Built-in movement macros and move-in-black features make programming fast and easy and you can save time running cables and extension cords by power linking multiple units as well. Fits best in the CHS-40 VIP gear bag.



- DMX Channels: 5 or 11
- Light Source: 1 LED (cool white) 10 W, (2 A), 50,000 hours
- Beam Angle: 13°
- Combined Colour/gobo combinations: 8 patterns + open
- Illuminance: 1,110 lux @ 2 m
- Input Voltage: 100 to 240 VAC, 50/60 Hz (auto-ranging)
- Weight: 2.1 kg (4.6 lbs)
- Size: 190.5 x 119.3 x 269 mm (7.5 x 4.7 x 10.6 in)



Gobos



Freedom Everywhere

100% battery-operated and DMX wireless fixtures



WIRELESS



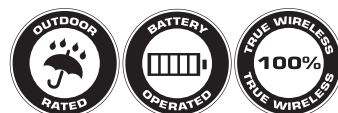
FC

Freedom Par Hex-4
(See page 14)



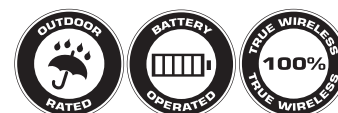
FC

Freedom Flex H4 IP
(See page 14)



FC

Freedom Par Quad-4 IP
(See page 14)



FC

Freedom Par Tri-6
(See page 15)





Anti-glare shield



Built-in adjustable kickstand



Built-in threaded hole
for easy mounting



CHS-FR4 VIP Gear Bag
(sold separately)



IRC-6 Remote Included



Freedom Par Hex-4

The Freedom Par Hex-4 is the most colourful model in the next generation of the Freedom Par family. It has four 10 W RGBAW+UV LEDs for that extra punch and the special effects that white and UV add to colour mixing. The Freedom Par Hex-4 has a special limiter option for extending battery life so that when you use more than 4 colours you know you'll get a good long show!



Credit: Sounds Alive Entertainments Lincoln

- DMX Channels: 6, 8 or 12
- Light Source: 4 LEDs (hex-colour RGBAW+UV) 10 W (2 A), 50,000 hours
- Beam Angle: 23°
- Illuminance: 1,372 lux @ 2 m
- Maximum Run Time (all on): 8 hours
- Maximum Run Time (single colour): 20 hours
- Input Voltage: 100 to 240 VAC, 50/60 Hz (auto-ranging)
- Weight: 2.9 kg (6.2 lbs)
- Size: 138 x 145 x 184 mm (5.4 x 5.7 x 7.2 in)



IRC-6 Remote Included



Removable Battery

Charge multiple units
with the
Freedom Flex H4 IP X6

Freedom Flex H4 IP

Freedom Flex H4 IP features a quick-change battery pack for easy battery charges and changes making this 100% wireless, battery-operated par with a built-in D-Fi transceiver even more flexible and powerful. Freedom Flex H4 IP has hex-colour (RGBAW + UV) LED technology for unlimited colour mixing capabilities. The fixture is temporary outdoor-rated and has a robust housing that repels water, snow, dirt, and sand for all-weather applications. Freedom Flex H4 IP has multiple wireless triggering and control options via the FlareCON Air and the FlareCON app and it works in master/slave mode with any Freedom Par. **System includes 6 Freedom Flex H4, Charging Road Case and 6 Freedom Flex batteries.**

- DMX Channels: 6, 8 or 12
- Light Source: 4 LEDs (hex-colour RGBAW + UV) 10 W, (2 A), 50,000 hours
- Beam Angle: 23°
- Field Angle: 34°
- Illuminance: 2,163 lux @ 2 m
- Maximum Run Time (all on): up to 8 hours
- Maximum Run Time (single colour): up to 20 hours
- IP Rating: IP54
- Weight: 8.8 lbs (4 kg)
- Size: 5.7 x 5.4 x 8 in (145 x 138 x 204 mm)



Freedom Flex Battery

- Battery Type: Li-ion
- Battery Capacity: 11 Ah
- Battery Voltage: 11.1 VDC
- Quantity of Cells: 15
- Rechargeable: Yes
- Watt Hours: 122.1 Wh
- Lithium Content: 131.6 g
- Weight: 1 kg (2.2 lbs)
- Size: 127.83 x 53.16 x 132.62 mm (5 x 2 x 5.22 in)



IRC-6 Remote Included



Freedom Par Quad-4 IP

Freedom Par Quad-4 IP is a 100% TRUE wireless, battery-operated, quad-colour (RGBA) LED Par with built-in D-Fi transceiver. Its temporary outdoor-rated robust housing repels water, snow, dirt, and sand for all-weather applications and is available in black or white. Freedom Par Quad-4 IP works in Master/Slave mode with first-generation Freedom Pars and it has multiple wireless triggering and control options via the FlareCON Air and the FlareCON app. Convenient, wireless non-DMX control is available using the IRC-6 Remote and customised colours can be created using the built-in LED display. Shine light where it is needed using the built-in adjustable kickstand and prevent light spillage with the built-in glare shield.



Photo by: DJ Brent

- DMX Channels: 4, 6 or 10
- Light Source: 4 LEDs (quad-colour RGBA) 5 W, (2 A), 50,000 hours
- Beam Angle: 15°
- Illuminance: 2,464 lux @ 2 m
- IP Rating: IP54
- Maximum Run Time (all on): 8 hours
- Maximum Run Time (single colour): 20 hours
- Input Voltage: 100 to 240 VAC, 50/60 Hz (auto-ranging)
- Weight: 3.6 kg (8 lbs)
- Size: 145 x 138 x 191 mm (5.7 x 5.4 x 7.5 in)





IRC-6 Remote Included



IRC-6 Remote Included

Available in black or white



Carry Bag with Multi-charger Included



NEW



IRC-6 Remote Included



Carry Bag with Multi-charger Included



BATTERY & WIRELESS DMX

Freedom Par Tri-6

Freedom Par Tri-6 is powerful, bright, and truly 100% wireless with a rechargeable battery and a built-in D-Fi transceiver. Freedom Par Tri-6 has 18 W of RGB colour mixing and can be operated with the control panel, the included CHAUVET DJ IRC-6 remote, or from any mobile phone or tablet running the FlareCON mobile app. Freedom Par Tri-6 fits perfectly inside TRUSST and all other 12" box truss, and travels safely and stylishly in the CHAUVET DJ CHS-FR4 VIP Gear Bag.

Freedom H1

Freedom H1 is a compact 100% TRUE wireless, battery-operated, LED wash light with a built-in D-Fi transceiver. The fixture features a single hex-colour (RGBAW+UV) 10 W LED. Its magnetic base makes it easy to mount the light to most metal surfaces providing added versatility. The included magnetic gel holder allows for quick swapping of filters. Because of its small size, Freedom H1 features effortless transport and set-up. Freedom H1 has a digital display for easy control and adjustment of all settings. Multiple control options include stand-alone mode, wireless DMX or IR. The Freedom H1 X4 system includes 4 Freedom H1, 4 diffusers, 1 Multi-Charger, 1 IRC-6 Remote and 1 Carry Bag.

Freedom Q1N

Freedom Q1N is a battery-powered RGB+WW pin spot fixture with a built-in D-Fi transceiver. Part of the 100% TRUE wireless Freedom ecosystem, Freedom Q1N can be controlled remotely and programmed in sync with other Freedom products. This compact and powerful fixture features a narrow beam perfect for highlighting special event elements. Its magnetic base and small size means effortless mounting, controlling, and transporting. Freedom Q1N is available in either black or white housing making it suitable for any event. The Freedom Q1N system includes 4 fixtures, a carry bag, multi-charger, and IRC-6 remote.



- DMX Channels: 3, 4, 5 or 9
- Light Source: 6 LEDs (tri-colour RGB) 3 W (600 mA), 50,000 hours
- Beam Angle: 15°
- Illuminance: 1,938 lux @ 2 m
- Maximum Run Time (all on): 8 hours
- Maximum Run Time (single colour): 20 hours
- Input Voltage: 100 to 240 VAC, 50/60 Hz (auto-ranging)
- Weight: 2.6 kg (5.8 lbs)
- Size: 138 x 145 x 184 mm (5.4 x 5.7 x 7.2 in)



Photo by: Lenisse Komatsu

- DMX Channels: 6, 8 or 12
- Light Source: 1 LED (hex-colour RGBAW+UV) 10 W, (3 A), 50,000 hours
- Beam Angle: 21°
- Illuminance (w/ filter): 268 lux @ 2 m
- Illuminance (w/o filter): 314 lux @ 2 m
- Maximum Run Time (all on): up to 8 hours
- Maximum Run Time (single colour): up to 20 hours
- Input Voltage: 8.4VDC, 1.35A (external power supply: 100-240 VAC, 50/60 Hz)
- Weight: 0.7 kg (1.4 lbs) - single unit
- Size: 97 x 75 x 139 mm (3.8 x 3 x 5.5 in) - single unit



- DMX Channels: 4, 6 or 10
- Light Source: 1 LED (quad-colour RGB+WW) 6 W, (2 A), 50,000 hours
- Beam Angle (w/o filter) : 8°
- Illuminance (w/o filter): 1,700 lux @ 2 m
- Illuminance (w/ filter): 415 lux @ 2 m
- Maximum Run Time (all on): up to 8 hours
- Maximum Run Time (single colour): up to 15 hours
- Input Voltage: 8.4 VDC, 1.3 A (external power supply: 100-240 VAC, 47/63 Hz)
- Weight: 0.6 kg (1.4 lbs)
- Size: 97 x 75 x 139 mm (3.8 x 3 x 5.5 in)



NEW



IRC-6 Remote Included



FC

Freedom Centerpiece

Freedom Centerpiece is an elegant 100% TRUE wireless, battery-operated uplight to highlight centerpiece event elements. Match any decor with this robust base uplight made to support large floral arrangements, featuring 3 varied sized rings of 39 LEDs. Freedom Centerpiece is outdoor-rated, meaning table spills are of no concern to party planners, and its polarised lenses eliminate unwanted glare for event guests! Wirelessly control the complete 4-pack system, including black housing covers, and elevate the elegance of your table setting.



- DMX Channels: 6, 8, 10, 12 or 16
- Light Source (ring 1): 12 LEDs (quad-colour RGBW) 0.2 W (0.018 mA) 50,000 hours
- Light Source (ring 2): 7 LEDs (quad-colour RGBW) 0.2 W (0.018 mA) 50,000 hours
- Light Source (ring 3): 20 LEDs (dual-colour CW/WW) 0.1 W (0.018 mA) 50,000 hours
- Beam Angle: 23°
- Illuminance: 510 lux @ 1 m
- IP Rating: IP54
- Weight: 1.3 kg (3 lbs)
- Size: 237.9 x 237.9 x 32.5 mm (9.4 x 9.4 x 1.3 in)



NEW



IRC-6 Remote Included



FC

Freedom Cyc

Freedom Cyc is a 100% TRUE wireless, battery-operated cyclorama light that surfaces with a wide, even wash never before seen in a fixture of its size. Its unique lens design perfectly mixes the RGB+WW colour spectrums. Freedom Cyc can be used on battery power or connected to electrical mains for even greater output! Being part of the Freedom family of 100% wireless products, Freedom Cyc can be controlled remotely and works in Master/Slave with other Freedom fixtures. The unit has multiple wireless control options via FlareCON, IRC-6, or DMX using a D-Fi transmitter.



- DMX Channels: 4, 6 or 10
- Light Source: 16 LEDs (4 red, 4 green, 4 blue, 4 warm white) 48 W total (3.5 A), 50,000 hours
- Beam Angle: 52°
- Maximum Run Time (all on): up to 8 hours
- Maximum Run Time (single colour): up to 20 hours
- Recharge Time: 5 hours
- Colour Temperature Range: 2800 to 6500 K
- Input Voltage: 100 to 240 VAC, 50/60 Hz (auto-ranging)
- Weight: 3.3 kg (7.2 lbs)
- Size: 191.2 x 148.2 x 138 mm (7.5 x 5.8 x 5.4 in)



NEW



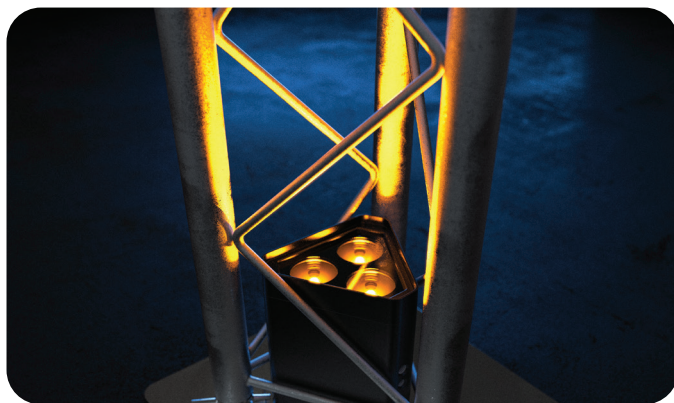
IRC-6 Remote Included



FC

Freedom Wedge Quad

The Freedom family of CHAUVET DJ fixtures means 100% TRUE wireless, battery-operated products with built-in D-Fi™ transceivers to send and receive wireless DMX signals. Freedom Wedge Quad harnesses that power into a triangularly shaped quad-colour LED wash light designed to fit inside triangular truss systems. The light has a built-in adjustable leg to shine light where it's needed, and Freedom Wedge Quad can be attached to 35 mm truss without the need for brackets using M10 or M12 threaded rig points. Create any colour without DMX by using the built-in digital display or easily control static colours and automated programs with the included IRC-6 remote.



- DMX Channels: 4, 6, 10
- Light Source: 3 LEDs (quad-colour RGBA) 6 W, (2.4 A), 50,000 hours
- Beam Angle: 19°
- Maximum Run Time (all on): up to 8 hours
- Maximum Run Time (single colour): up to 20 hours
- Recharge Time: 5 hours
- Illuminance: 1,144 lux @ 2 m
- Input Voltage: 100 to 240 VAC, 50/60 Hz (auto-ranging)
- Weight: 1.8 kg (3.8 lb)
- Size: 117 x 117 x 166.5 mm (4.4 x 4.4 x 6.6 in)



NEW



IRC-6 Remote Included



FC

Freedom Gobo IP

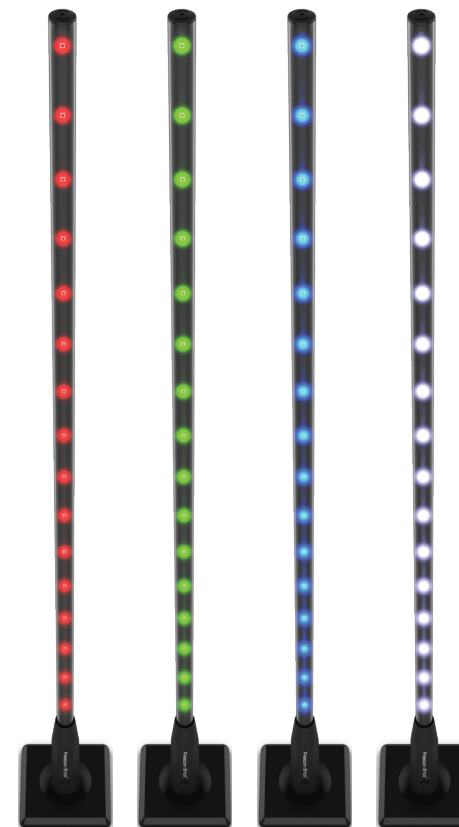
Inclement weather? No power? No problem! Effortlessly customise special event spaces with monograms, logos, and more indoors or outdoors with Freedom Gobo IP. A member of the Freedom family of products, Freedom Gobo IP is a 100% TRUE wireless, battery-operated cool white LED Gobo Projector with built-in D-Fi transceiver. The unit features a rugged die cast aluminum housing that is temporary outdoor-rated and robust enough to repel water, snow, dirt, and sand for all-weather applications. Convenient, wireless non-DMX control is possible using the IRC-6 remote. Freedom Gobo IP has built-in dimming curves for smooth LED fading and is fan-less for silent operation.



- DMX Channels: 1 or 3
- Light Source: 1 LED (cool white) 16 W, (1.2 A), 50,000 hours
- Colour Temperature: 6000 K
- Gobo Size (E): 37.5 mm outside, 24.0 mm image, 1.0 mm max thickness
- Beam Angle (narrow): 16°
- Beam Angle (wide): 31°
- Illuminance (narrow): 3135 lux @ 2 m
- Illuminance (wide): 1002 lux @ 2 m
- Maximum Run Time: 8 hrs
- IP Rating: IP-54
- Weight: 2.5 kg (5.4 lbs)
- Size: 293 x 118 x 201 mm (11.5 x 4.6 x 7.9 in)



Each LED can be pixel-mapped for ultimate show and programming creativity



FC

BATTERY & WIRELESS DMX

Freedom Stick

- DMX Channels: 3, 8, 48 or 50
- Light Source: 32 SMD LEDs (tri-colour RGB) 0.2 W (50mA), 50,000 hours
- Coverage Angle: 360°
- Maximum Run Time (single colour): up to 20 hours
- Maximum Run Time (all on): up to 8 hours
- Weight: 1.6 kg (3.5 lbs)
- Size: 161 x 161 x 1550 mm (6.3 x 6.3 x 61 in) with base



Freedom Stick Pack

Includes: 4 Freedom Sticks, 1 Multi-Charger, 1 IRC-6 Remote and 1 Carrying Bag.



Rain or Shine

Indoors and Outdoors



Freedom Flex H4 IP

The Freedom Flex H4 IP is a temporary outdoor IP-54 rated fixture with a robust housing that repels water, snow, dirt, and sand for all-weather applications.

For full specs (See page 19)



IRC-6 Remote Included



Freedom Par Quad-4 IP

Freedom Par Quad-4 IP is a 100% wireless, battery operated, quad-colour (RGBA) LED wash light with a built-in D-Fi transceiver and a robust housing that repels water, snow, dirt, and sand during outdoor events. Multiple wireless control options are available via the FlareCON Air and the FlareCON app or with the point-and-shoot IRC-6 remote. Freedom Par Quad-4 IP also works in master/slave mode with first-generation Freedom fixtures.



IRC-6 Remote Included



Freedom Flex H4 IP

Freedom Flex H4 IP features a quick-change battery pack for easy battery charges and changes making this 100% wireless, battery-operated par with a built-in D-Fi transceiver even more flexible and powerful. Freedom Flex H4 IP has hex-colour (RGBAW + UV) LED technology for unlimited colour mixing capabilities. The fixture is temporary outdoor-rated and has a robust housing that repels water, snow, dirt, and sand for all-weather applications. Freedom Flex H4 IP has multiple wireless triggering and control options via the FlareCON Air and the FlareCON app and it works in master/slave mode with any Freedom Par. **System includes 6 Freedom Flex H4, Charging Road Case and 6 Freedom Flex batteries.**



EXTERIOR

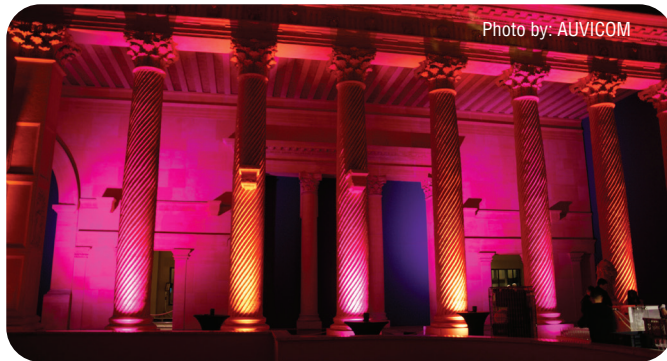
NEW



Festoon 2 RGB

Festoon 2 RGB is a décor string lighting system that replicates the feel of vintage event lighting.

For full specs, see page 36.



- DMX Channels: 4, 6, or 10
- Light Source: 4 LEDs (quad-colour RGBA) 5 W, (2 A), 50,000 hours
- Beam Angle: 15°
- Illuminance: 2,464 lux @ 2 m
- IP Rating: IP54
- Maximum Run Time (all on): 8 hours
- Maximum Run Time (single colour): 20 hours
- Input Voltage: 100 to 240 VAC, 50/60 Hz (auto-ranging)
- Weight: 3.6 kg (8 lbs)
- Size: 145 x 138 x 191 mm (5.7 x 5.4 x 7.5 in)



- DMX Channels: 6, 8 or 12
- Light Source: 4 LEDs (hex-colour RGBAW + UV) 10 W, (2 A), 50,000 hours
- Beam Angle: 23°
- Field Angle: 34°
- Illuminance: 2,163 lux @ 2 m
- Maximum Run Time (all on): up to 8 hours
- Maximum Run Time (single colour): up to 20 hours
- IP Rating: IP54
- Weight: 4 kg (8.8 lbs)
- Size: 145 x 138 x 204 mm (5.7 x 5.4 x 8 in)



NEW



Festoon 2 EXT RGB

Festoon 2 EXT RGB increases the length of the Festoon 2 RGB to achieve longer runs.

For full specs, see page 36.

WASH LIGHTS

events

Credit: Kevents



EVE E-100Z

EVE E-100Z is a powerful spot fixture featuring sharp pattern projection with a 100 W warm white LED light source. Features D-Fi USB compatibility for wireless master/slave or DMX control. This versatile fixture works with metal or glass gobos to create incredible gobo or pattern details. The manual zoom and framing shutters make it simple to control beams.

- DMX Channels: 1 or 3
- Light Source: 1 LED (warm white) 100 W (2.3 A), 50,000 hours
- Colour Temperature: 3,500 K
- Gobo Size: M
(66 mm outside, 48 mm image, 2 mm max. thickness)
- Zoom Angle (manual): 14° to 30°
- Illuminance (14°): 15,100 lux @ 2 m
- Illuminance (30°): 3,800 lux @ 2 m
- Input Voltage: 100 to 240 VAC, 50/60 Hz (auto-ranging)
- CRI: 80
- Weight: 5.7 kg (12.6 lbs)
- Size: 611 x 183 x 430 mm (24 x 7.2 x 16.9 in)



EVE E-50Z

EVE E-50Z is an LED ellipsoidal that shines a hard-edged, warm white spot and features D-Fi USB compatibility for wireless master/slave or DMX control. Manual zoom gives you the flexibility to project from any distance and its framing shutters let you easily alter and control the projected beam. EVE E-50Z includes holders for glass and steel gobos as well as a gel frame. You can operate EVE E-50Z in standalone mode eliminating the need for DMX control and you can save time running extension cords by power linking multiple units.

- DMX Channels: 1 or 3
- Light Source: 1 LED (warm white) 50 W, (1.3 A), 50,000 hours
- Colour Temperature: 3,500 K
- Gobo Size: D
(53.3 mm outside, 43 mm image, 2 mm max. thickness)
- Zoom Angle (manual): 20° to 39°
- Illuminance (20°): 7,910 lux @ 2 m
- Illuminance (39°): 2,710 lux @ 2 m
- Input Voltage: 100 to 240 VAC, 50/60 Hz (auto-ranging)
- Weight: 4.2 kg (9.2 lbs)
- Size: 480 x 157 x 381 mm (18.9 x 6.2 x 15 in)



EVE F-50Z

EVE F-50Z is a powerful warm white 50 W Fresnel fixture, perfect for theatrical, worship and broadcast installations. It features D-Fi USB compatibility for wireless master/slave or DMX control. Included barn doors and gel frame let you shape and colour the beam for the perfect spot. EVE F-50Z has a locking power connector and its smooth dimming capabilities make it great for video applications. EVE F-50Z is easily controllable via DMX.

- DMX Channels: 1 or 3
- Light Source: 1 LED (warm white) 50 W, (1.3 A), 50,000 hours
- Colour Temperature: 3,500 K
- Zoom Angle (manual): 17° to 50°
- Illuminance (17°): 4,780 lux @ 2 m
- Illuminance (50°): 998 lux @ 2 m
- Input Voltage: 100 to 240 VAC, 50/60 Hz (auto-ranging)
- CRI: 92
- Weight: 3.9 kg (8.4 lbs)
- Size: 281 x 212 x 328 mm (11.1 x 8.3 x 13 in)



Gel Frame Included



EVE TF-20

EVE TF-20 is a compact, energy efficient, soft edge LED accent luminaire that can function as a regular PAR can, while its classic Fresnel style emulates stage and theatrical lighting. Conveniently included barn doors block light from unwanted areas, letting you focus on a particular space or object. Thanks to its CCR (Constant Current Reduction) LED dimming, it works seamlessly with conventional dimmers, and is flicker-free in filmed productions. EVE TF-20 is MET certified and is suited for new or retrofit installations with the included track adaptor. The unit is suited for mobile use right out of the box using its standard power cord.

- Light Source: 1 COB LED (warm white) 20 W, (0.5 A), 50,000 hours
- Colour Temperature: 2,700 K
- Beam Angle: 24°
- Illuminance: 1,506 lux @ 2 m
- Input Voltage: 85 to 120 VAC, 50/60 Hz (auto-ranging)
- CRI: 91
- Weight: 1.2 kg (2.6 lbs)
- Size: 153.5 x 140 x 184 mm (6 x 5.5 x 7.2 in)
- Compatible Track: Type H



Gel Frame Included





Included Gel Frame



Optional D-Fi USB Transceiver



EVE P-100 WW

Warm, bright and even wash is at hand with EVE P-100 WW, a high output warm white (3500 K) wash light designed for mobile and installation applications. It includes interchangeable magnetic lenses to alter the beam to desired angles. EVE P-100 WW features a built-in gel frame holder and handy 6¼-inch accessory slot to hold barn doors. Its fanless design ensures 100% silent operation making it great for quiet applications. High-frequency LED dimming eliminates flicker making EVE P-100WW great for video and broadcast applications. D-Fi USB compatibility is on board for wireless master/slave or DMX control as well as powerCON®-compatible power input/output connections for power linking. Sturdy cast aluminum housing provides extra strength without the weight. EVE P-100WW fits best in the CHS-40 VIP gear bag.

- DMX Channels: 1, 2 or 4
- Light Source: 1 COB LED (warm white) 100 W, (2.7 A), 50,000 hours
- Accessory Holder/Gel Frame Size: 6.25 in (158.75 mm)
- Beam Angle: 25°, 35°, or 53°
- Field Angle: 40°, 50°, or 80°
- Illuminance (25°): 7,920 lux @ 2 m
- Illuminance (35°): 4,340 lux @ 2 m
- Illuminance (53°): 1,469 lux @ 2 m (no lens installed)
- Colour Temperature: 3500 K
- Input Voltage: 100 to 240 VAC, 50/60 Hz (auto-ranging)
- CRI: 98
- Weight: 3.5 kg (7.6 lbs)
- Size: 220 x 245 x 305 mm (8.6 x 9.65 x 12 in)

Optional Barn Door
(Sold Separately)

Included magnetic lenses



Included Gel Frame



Optional D-Fi USB Transceiver



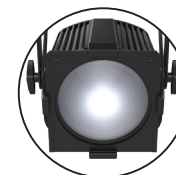
EVE P-130 RGB

EVE P-130 RGB is a robust RGB wash light designed for mobile lighting entertainers. Interchangeable magnetic lenses are included to alter the beam to desired angles. EVE P-130 RGB has a sturdy cast aluminum housing that provides extra strength without added weight. D-Fi USB compatibility is also onboard providing the option for wireless master/slave or DMX control as well as powerCON®-compatible power input/output connections for power linking. Its fanless design ensures 100% silent operation and the unit's high-frequency LED dimming offers flicker-free operation perfect for video use. EVE P-130 RGB fits best in the CHS-40 VIP gear bag.

- DMX Channels: 3 or 9
- Light Source: 40 LEDs (13 red, 13 green, 14 blue) 130 W total, (2.5 A), 50,000 hours
- Accessory Holder/Gel Frame Size: 6.25 in (159 mm)
- Beam Angles: 25°, 35° or 45°
- Field Angles: 45°, 55° or 65°
- Illuminance (25°): 2190 lux @ 2 m
- Illuminance (35°): 1100 lux @ 2 m (no lens installed)
- Illuminance (45°): 727 lux @ 2 m
- Input Voltage: 100 to 240 VAC, 50/60 Hz (auto-ranging)
- Weight: 3.5 kg (7.6 lbs)
- Size: 220 x 245 x 305 mm (8.6 x 9.6 x 12 in)

Optional Barn Door
(Sold Separately)

Included magnetic lenses



Included Gel Frame



Optional D-Fi USB Transceiver



EVE P-140 VW

EVE P-140 VW is a variable white wash light featuring cool white, warm white and amber LEDs. EVE P-140 VW is a D-Fi USB compatible fixture providing the option to control the fixture wirelessly in master/slave mode or with DMX control as well as powerCON®-compatible power input/output connections for power linking. This sturdy wash light has a built-in gel frame holder and a 6¼-inch accessory slot to hold optional barn doors. EVE P-140 VW comes with 25° and 45° interchangeable lenses that attach magnetically to alter the beam for added lighting flexibility. EVE P-140 VW fits best in the CHS-40 VIP gear bag.

- DMX Channels: 3 or 9
- Light Source: 40 LEDs (13 cool white, 13 warm white, 14 amber) 140 W total, (2.4 A), 50,000 hours
- Accessory Holder/Gel Frame Size: 6.25 in (159 mm)
- Beam Angles: 25°, 35° or 45°
- Field Angles: 45°, 55° or 65°
- Illuminance (25°): 2,490 lux @ 2 m
- Illuminance (35°): 1,245 lux @ 2 m [no lens installed]
- Illuminance (45°): 806 lux @ 2 m
- Input Voltage: 100 to 240 VAC, 50/60 Hz (auto-ranging)
- CRI: 77
- Weight: 3.5 kg (7.6 lbs)
- Size: 220 x 245 x 305 mm (8.6 x 9.6 x 12 in)

Optional Barn Door
(Sold Separately)

Included magnetic lenses



Included Gel Frame



Optional D-Fi USB Transceiver



EVE P-150 UV

EVE P-150 UV is a brawny blacklight cannon fitted with 40 UV LEDs emitting 150 W of blacklight power. The unit is designed without a fan and its silent operation combined with its flicker-free output make it ideal for video use. EVE P-150 UV is D-Fi USB compatible giving users the option to control the light wirelessly in master/slave mode or wireless DMX control as well as powerCON®-compatible power input/output connections for power linking. 25° And 45° magnetic lenses to adjust the beam are included along with a gel frame holder and accessory slot for optional barn doors. EVE P-150 UV fits best in the CHS-40 VIP gear bag.

- DMX Channels: 1 or 5
- Light Source: 40 LEDs (UV) 150 W total, (2 A), 50,000 hours
- Accessory Holder/Gel Frame Size: 6.25 in (159 mm)
- Wavelength: 395 nm
- Coverage Angle:
(narrow lens): 25°
(no lens): 35°
(wide lens): 45°
- Input Voltage: 100 to 240 VAC, 50/60 Hz (auto-ranging)
- Weight: 3.5 kg (7.6 lbs)
- Size: 220 x 245 x 305 mm (8.6 x 9.6 x 12 in)



Optional Barn Door
(Sold Separately)



Included magnetic lenses

Photo by: Roy Beusker Fotografie

WASH LIGHTS



SlimPAR Pro

Powerful Wash Lighting



Photo by Picturesk - Client: DiverZe



7.5 inch Barn Doors
Optional



Optional IRC-6 Remote and
D-Fi USB Transceiver



SlimPAR Pro Q USB

SlimPAR Pro Q USB is a high-powered quad-colour (RGBA), low-profile wash light with D-Fi USB compatibility for wireless control. Dynamic and natural-looking amber LEDs provide expanded colour mixing capabilities. PowerCON®-compatible power input/output connections provide sturdy and secure power linking. SlimPAR Pro Q USB has built-in dimming curves to simulate halogen filaments. Added light spill control is possible because the fixture is compatible with most 7.5" barn doors.



7.5 inch Barn Doors
Optional



Optional IRC-6 Remote and
D-Fi USB Transceiver



SlimPAR Pro H USB

SlimPAR Pro H USB is designed for any application that calls for a high-power, low-profile LED wash light with precise colours. Features include D-Fi USB compatibility for wireless control. SlimPAR Pro H USB has no moving parts and is flicker-free so it is ideal for quiet and on-camera applications. PowerCON®-compatible power input/output connections provide sturdy and secure power linking. SlimPAR Pro H USB has built-in dimming curves to simulate halogen filaments. Generate a broad spectrum of colours and achieve natural-looking colour temperatures with 6-in-1 LED technology.



Photo by Picturesk - Client: DiverZe

- DMX Channels: 4, 5 or 10
- Light Source: 12 LEDs (quad-colour RGBA) 6 W (2 A), 50,000 hours
- Beam Angle: 16°
- Illuminance: 5,690 lux @ 2 m
- Input Voltage: 100 to 240 VAC, 50/60 Hz (auto-ranging)
- Weight: 3.3 kg (7.2 lbs)
- Size: 253 x 98 x 290 mm (10 x 3.9 x 11.4 in)



- DMX Channels: 6, 7 or 12
- Light Source: 12 LEDs (hex-colour RGBAW+UV) 10 W (2.4 A), 50,000 hours
- Beam Angle: 24°
- Illuminance: 3,218 lux @ 2 m
- Input Voltage: 100 to 240 VAC, 50/60 Hz (auto-ranging)
- Weight: 3.3 kg (7.2 lbs)
- Size: 253 x 98 x 290 mm (10 x 3.9 x 11.4 in)





BTair™

Control right from your phone or tablet straight to your lights!
No additional hardware needed!

- Bluetooth compatibility: V4.2 (or greater)
- Minimum Operating System (Android): Lollipop (V5)
- Minimum Operating System (Apple): iOS 8



Patent Pending



The Bluetooth® word mark and logos are registered trademarks owned by the Bluetooth SIG, Inc. and any use of such marks by Chauvet & Sons, LLC is under license. Other trademarks and trade names are those of their respective owners.



Bluetooth® Compatible Fixtures



NEW Patent Pending



Optional IRC-6 Remote

EZLink Par Q1BT

EZLink Par Q1BT is an extremely compact battery-powered quad-colour (RGBA) wash light with built-in Bluetooth® wireless technology. Control EZLink Par Q1BT from the free BTair smartphone app with no additional hardware needed! Easily warm sticks of TRUSST or bring the tightest spaces to light with EZLink Par Q1BT's magnetic base. EZLink Par Q1BT features a single RGBA LED for rich colour mixing including punchy amber.

NEW Patent Pending



COLORband Q3BT

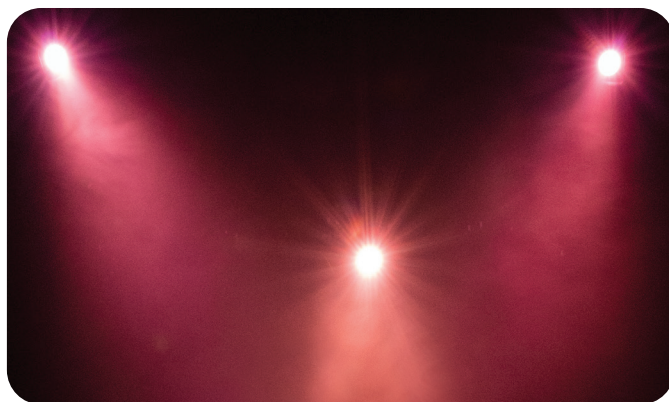
COLORband Q3BT is a full-size linear quad-colour (RGBA) wash light fitted with 3 zones of control. This linear wash light features DMX + built-in Bluetooth® wireless technology. Control COLORband Q3BT with the free BTair app from any smartphone or tablet; no additional hardware needed! Quad-colour LEDs allow for vibrant and warm colour mixing! Access built-in automated programs via Master/Slave, DMX, or optional IRC-6 remote. Power link multiple units to save time running extension cords.

Patent Pending



EZLink Par Q4BT

CHAUDET DJ makes creating exhilarating lighting easy with EZLink Par Q4BT. This battery-powered quad-colour (RGBA) LED Par fixture has Bluetooth® wireless technology built in, allowing you to control EZLink Par Q4BT with the free BTair app from any smartphone or tablet. No additional hardware needed! Genuine amber LEDs included with quad-colour lights like EZLink Par Q4BT provide richly vibrant and warm colour mixing or natural-looking colour temperatures. Other convenient control options include the IRC-6 remote and sound-activated or automated programs. EZLink Par Q4BT fits best in the CHS-40 VIP Gear Bag.



- Light Source: 1 LED (quad-colour RGBA) 5 W, (500 mA), 50,000 hours
- Beam Angle: 15°
- Illuminance: 355 lux @ 2 m
- Maximum Run Time (all on): up to 8 hours
- Maximum Run Time (single colour): up to 20 hours
- Recharge Time: 6 hours
- Input Voltage: 100 to 240 VAC, 50/60 Hz (auto-ranging)
- Weight: 0.4 kg (0.8 lbs)
- Size: 111.5 x 89 x 130 mm (4.4 x 3.5 x 5.1 in)
- Bluetooth Version: 4.2



- DMX Channels: 4, 6 or 16
- Light Source: 12 LEDs (quad-colour RGBA) 4 W, (1.4 A), 50,000 hours
- Beam Angle: 42°
- Illuminance: 635 lux @ 2 m
- Input Voltage: 100 to 240 VAC, 50/60 Hz (auto-ranging)
- Max Unobstructed Distance: 150 ft (45.7 m)
- Weight: 3.1 kg (6.6 lbs)
- Size: 1000 x 98 x 140 mm (39.3 x 3.8 x 5.5 in)
- Bluetooth version: 4.2



- DMX Channels: 4 or 8
- Light Source: 4 LEDs (quad-colour RGBA) 3 W, (952 mA), 50,000 hours
- Beam Angle: 15°
- Illuminance: 2,826 lux @ 2 m
- Maximum Run Time (all on): up to 8 hours
- Maximum Run Time (single colour): up to 20 hours
- Input Voltage: 100 to 240 VAC, 50/60 Hz (auto-ranging)
- Max Unobstructed Distance: 150 ft (45.7 m)
- Weight: 1.3 kg (2.8 lbs)
- Size: 145 x 145 x 143 mm (5.7 x 5.7 x 5.6 in)
- Bluetooth Version: 4.2



WASH LIGHTS

Patent Pending



Bluetooth®



Optional IRC-6 Remote



BTair™ Compatible

**EZLink Par Q6BT**

Battery-powered lighting just got even more convenient with EZLink Par Q6BT, a 100% TRUE wireless battery-operated Par with built-in Bluetooth® wireless technology. Harness the colour-mixing power of this versatile fixture with six quad-colour (RGBA) LEDs, including genuine amber, right from any smartphone or tablet—no additional hardware needed! Imagine the ability to wash smaller event spaces with dynamic lighting displays, using the free BTair smartphone app. EZLink Par Q6BT allows you convenient wireless non-DMX control using the IRC-6 remote or through sound-activated and automated programs. Fits best in the CHS-40 VIP Gear Bag.



- DMX Channels: 4 or 8
- Light Source: 6 LEDs (quad-colour RGBA) 3 W, (900mA), 50,000 hours
- Beam Angle: 19°
- Illuminance: 1,268 lux @ 2 m
- Maximum Run Time (all on): up to 8 hours
- Maximum Run Time (single colour): up to 20 hours
- Input Voltage: 100 to 240 VAC, 50/60 Hz (auto-ranging)
- Max Unobstructed Distance: 150 ft (45.7 m)
- Weight: 1.7 kg (3.6 lbs)
- Size: 206.6 x 244 x 86 mm (8 x 9.6 x 3.4 in)
- Bluetooth Version: 4.2



Patent Pending



Bluetooth®



Optional IRC-6 Remote



BTair™ Compatible

**SlimPAR Q12BT**

SlimPAR Q12BT is a compact wash light with built-in Bluetooth® wireless technology that allows you to control the light from any smart phone or tablet without the need for any additional hardware. SlimPAR Q12BT features 12 quad-colour (RGBA) LEDs that generate a broad spectrum of colours and achieve natural-looking colour temperatures. Easily set static colours or automated programs with the optional IRC-6 remote or create eye-catching effects with sound-activated and automated programs. Download the BTair app for free from your favorite online app store.



Photo by: Victor Cervantes, IVC Producciones, Cartagena, Colombia

- DMX Channels: 4 or 12
- Light Source: 12 LEDs (quad-colour RGBA) 3.5 W, (1.5 A), 50,000 hours
- Beam Angle: 17°
- Illuminance: 3,650 lux @ 2 m
- Input Voltage: 100 to 240 VAC, 50/60 Hz (auto-ranging)
- Max Unobstructed Distance: 150 ft (45.7 m)
- Weight: 1.5 kg (3.3 lbs)
- Size: 279 x 275 x 74 mm (11 x 10.8 x 2.9 in)
- Bluetooth Version: 4.2



Patent Pending



Bluetooth®



Optional IRC-6 Remote



BTair™ Compatible

**SlimPAR T12BT**

SlimPAR T12BT makes remote light control easy with its on-board Bluetooth® wireless technology. Download the BTair app for free from your favorite app store and enjoy the ultra-convenient ease of controlling SlimPAR T12BT right from your smart phone or tablet. SlimPAR T12BT has 12 tri-colour (RGB) LEDs and its compact design easily fits inside sticks of truss making it perfect for truss warming. An optional IRC-6 remote can also be used for control as well as DMX, automated and sound-activated programs.



Photo by: B Productions, Cleveland, Ohio

- DMX Channels: 3 or 7
- Light Source: 12 LEDs (tri-colour RGB) 2.5 W, (1 A), 50,000 hours
- Beam Angle: 21°
- Illuminance: 2,850 lux @ 2 m
- Input Voltage: 100 to 240 VAC, 50/60 Hz (auto-ranging)
- Max Unobstructed Distance: 150 ft (45.7 m)
- Weight: 1.2 kg (2.6 lbs)
- Size: 264 x 214 x 76.9 mm (10.3 x 8.4 x 3 in)
- Bluetooth Version: 4.2



Patent Pending



Optional IRC-6 Remote



BTair™ Compatible



COLORband T3BT

COLORband T3BT is a compact linear wash light with built-in Bluetooth® wireless technology. With the BTair app, COLORband T3BT can be controlled remotely from any smart phone or tablet without any additional hardware. Download BTair for free from your favorite online app store. COLORband T3BT has 12 tri-coloured (RGB) LEDs and 3 zones of control to create amazing automated effects. Access built-in automated programs via optional IRC-6 Remote, master/slave or DMX.



- DMX Channels: 3, 5 or 13
- Light Source: 12 LEDs (tri-colour RGB), 2.5 W (1 A) 50,000 hours
- Beam Angle: 42°
- Illuminance: 548 lux @ 2 m
- Input Voltage: 100 to 240 VAC, 50/60 Hz (auto-ranging)
- Max Unobstructed Distance: 150 ft (45.7 m)
- Weight: 3 kg (6.6 lbs)
- Size: 1000 x 98 x 140 mm (39.3 x 3.8 x 5.5 in)
- Bluetooth Version: 4.2



Patent Pending



Optional IRC-6 Remote and D-Fi USB Transceiver

Tripod, Carrying Bag and Wireless Footswitch included



BTair™ Compatible

4BAR LTBT

4Bar LTBT is a convenient pack-n-go system that, not only sets up and tears down in seconds, but is now easier than ever to control. On-board Bluetooth® wireless technology means you can create and control dynamic lighting looks directly from a smartphone or tablet, without any additional hardware, using the free BTair app. If that weren't convenient enough, 4Bar LTBT also has D-Fi USB compatibility for wireless Master/Slave and DMX control. You can achieve total room or stage coverage with four individually adjustable heads, and you can create even larger coordinated light shows with other 4BAR fixtures in master/slave mode.



- DMX Channels: 3, 5 or 15
- Light Source: 12 LEDs (tri-colour RGB) 3 W, (1 A), 50,000 hours
- Beam Angle: 12°
- Illuminance: 2,382 lux @ 2 m (per pod)
- Input Voltage: 100 to 240 VAC, 50/60 Hz (auto-ranging)
- Weight: 3.5 kg (7.8 lbs)
- Size: 918.1 x 95 x 274.3 mm (36.1 x 3.7 x 10.8 in)
- Bluetooth Version: 4.2
- Max Unobstructed Distance: 150 ft (45.7 m)



WASH LIGHTS



Sit-flat housing
for easy cable access



Optional IRC-6 Remote and
D-Fi USB Transceiver

COREpar 40 USB

COREpar 40 USB produces a full spectrum of light with the unsurpassed colour mixing of COB (chip-on-board) technology. Includes a separate magnetic lens to provide the flexibility to go from an ultra-wide wash to a narrow beam in seconds. High frequency LED dimming achieves smooth LED fades and ensures a flicker-free performance in video applications. Multiple control options include DMX, master/slave and sound activation modes as well as wireless control thanks to D-Fi USB compatibility. Point-and-shoot operation of static colours and automated programs is also possible with the optional IRC-6 remote control.



Photo by: Kevents

- DMX Channels: 3 or 8
- Light Source: 1 COB LED (tri-colour RGB) 40 W (2 A), 50,000 hours
- Beam Angle: 40° (without lens)
- Beam Angle: 20° (with lens)
- Illuminance: 243 lux @ 2 m (without lens)
- Illuminance: 1,660 lux @ 2 m (with lens)
- Input Voltage: 100 to 240 VAC, 50/60 Hz (auto-ranging)
- Weight: 1.6 kg (3.4 lbs)
- Size: 132 x 189 x 242 mm (5.2 x 7.4 x 9.5 in)



Sit-flat housing
for easy cable access



Optional IRC-6 Remote and
D-Fi USB Transceiver

COREpar 80 USB

COREpar 80 USB produces a full spectrum of light with the unsurpassed colour mixing of COB (chip-on-board) technology. Includes a separate magnetic lens to provide the flexibility to go from an ultra-wide wash to a narrow beam in seconds. High frequency LED dimming achieves smooth LED fades and ensures a flicker-free performance in video applications. Multiple control options include DMX, master/slave and sound activation modes as well as wireless control thanks to D-Fi USB compatibility. Point-and-shoot operation of static colours and automated programs is also possible with the optional IRC-6 remote control.

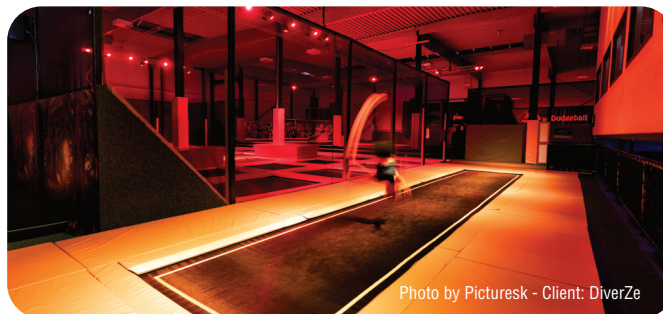


Photo by Picturesk - Client: DiverZe

- DMX Channels: 3 or 8
- Light Source: 1 COB LED (tri-colour RGB) 80 W (2 A), 50,000 hours
- Beam Angle: 70° (without lens)
- Beam Angle: 25° (with lens)
- Illuminance: 405 lux @ 2 m (without lens)
- Illuminance: 2,143 lux @ 2 m (with lens)
- Input Voltage: 100 to 240 VAC, 50/60 Hz (auto-ranging)
- Weight: 2 kg (4.2 lbs)
- Size: 200 x 143 x 253 mm (7.9 x 5.6 x 10 in)



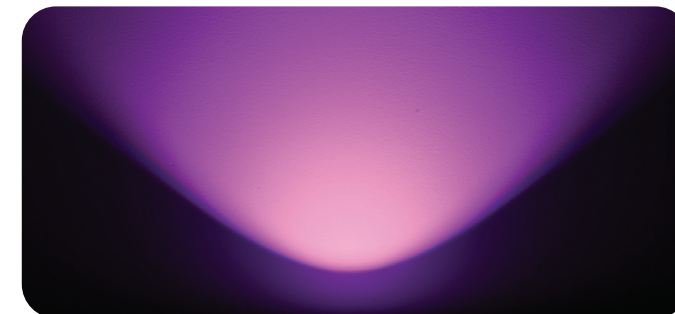
Sit-flat housing
for easy cable access



Optional IRC-6 Remote and
D-Fi USB Transceiver

COREpar UV USB

COREpar UV USB is a compact UV wash with COB (chip-on-board) LED technology, offering D-Fi USB compatibility for wireless master/slave or DMX control. It includes a separate magnetic lens to provide the flexibility to go from an ultra-wide wash to a narrow beam in seconds. High frequency LED dimming achieves smooth LED fades and ensures a flicker-free performance in video applications. Multiple control options include DMX, master/slave and sound activation modes as well as wireless control thanks to D-Fi USB compatibility.



- DMX Channels: 1 or 5
- Light Source: 1 COB LED (UV) 70 W (1.5 A), 50,000 hours
- Wavelength: 390 to 400 nm
- Beam Angle: 100° (without lens)
- Beam Angle: 50° (with lens)
- Input Voltage: 100 to 240 VAC, 50/60 Hz (auto-ranging)
- Weight: 2.1 kg (4.6 lbs)
- Size: 139 x 200 x 253 mm (5.5 x 7.9 x 10 in)





Optional IRC-6 Remote and
D-Fi USB Transceiver



COLORband PiX USB

COLORband PiX USB is a linear LED wash light that functions as a pixel mapping effect, blinder or wall washer. It features D-Fi USB compatibility for wireless master/slave or DMX control. Pixel mapping functions mean you can create amazing animations and video effects. Access to multiple pre-built programs is available with or without DMX. The fixture's high-power, tri-colour LEDs nearly eliminate multicolour shadows and its high-frequency LED dimming lets you achieve flicker-free operation suitable for video applications. Save time running cables and power cords by power linking multiple units. COLORband PiX USB is ideal for quiet applications due to its silent operation and no moving parts. Control of static colours and automated programs is easy with the optional IRC-6 remote. Fits best in the optional CHS-60 VIP Gear Bag.



- DMX Channels: 3, 4, 6, 7, 8, 9, 12, 18, 36 or 41
- Light Source: 12 LEDs (tri-colour RGB) 3 W (1,000 mA), 50,000 hours
- Beam Angle: 27°
- Illuminance: 2,245 lux @ 2 m
- Input Voltage: 100 to 240 VAC, 50/60 Hz (auto-ranging)
- Weight: 1.8 kg (4 lbs)
- Size: 987 x 49 x 157 mm (38.9 x 2 x 6.2 in)



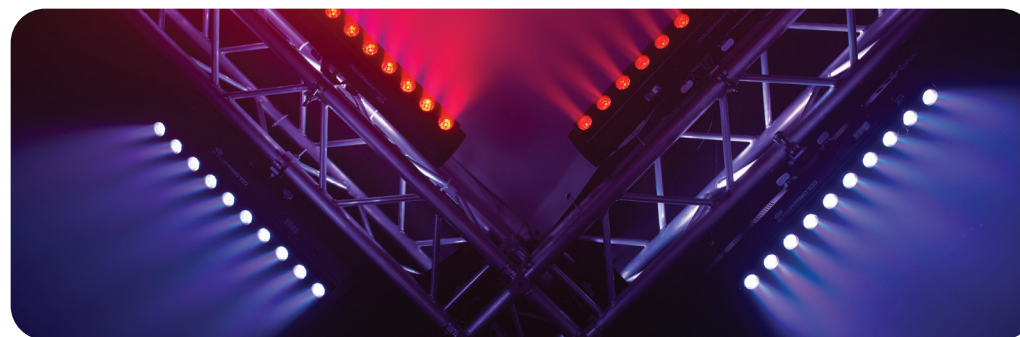
Optional IRC-6 Remote and
D-Fi USB Transceiver



WASH LIGHTS

COLORband PiX-M USB

COLORband PiX-M USB, a moving LED strip light, is a versatile wall-wash light that can create dynamic sweeping, chase, animation and blinder effects thanks to its rotating base, pixel-mapping capabilities, and the ability to control each of its 10 LEDs separately. Its motors allow you to angle the light where it's needed. COLORband PiX-M USB features D-Fi USB compatibility for wireless master/slave or DMX control but you can also access dramatic, pre-built automated programs with or without DMX. Wireless, non-DMX operation is also available with the optional IRC-6 remote.



- DMX Channels: 5, 6, 8, 10, 17, 32 or 36
- Tilt: 245°
- Light Source: 10 LEDs (tri-colour RGB) 9 W, (2A), 50,000 hours
- Beam Angle: 20°
- Illuminance: 6,120 lux @ 2 m
- Input Voltage: 100 to 240 VAC, 50/60 Hz (auto-ranging)
- Weight: 4.4 kg (9.6 lbs)
- Size: 785 x 67 x 123 mm (31 x 2.6 x 4.8 in)





Optional IRC-6 Remote and
D-Fi USB Transceiver

SlimBANK T18 USB

SlimBANK T18 USB is a powerful wash light with 18 tri-colour (RGB) LEDs that achieve smooth colour mixing. Adjustable barn doors help direct and focus the light. Convenient control options include auto and sound-activation programs as well as DMX. USB compatibility provides fast and easy wireless options.



Optional IRC-6 Remote and
D-Fi USB Transceiver

SlimPAR H6 USB

SlimPAR H6 USB is a low-profile RGBAW+UV LED wash light with D-Fi USB compatibility for wireless master/slave or DMX control. It also works in sound-active mode. Built-in dimming curves provide smooth LED fading, and the 6-in-1 LED technology generates a broad spectrum of natural-looking colours. Precise colours can also be created with the built-in LED display. Point-and-shoot operation of static colours and automated programs is possible with the optional IRC-6 remote. Compact designed, it works as a truss warmer.



Optional IRC-6 Remote and
D-Fi USB Transceiver

SlimPAR Q6 USB

SlimPAR Q6 USB is a low-profile, high-output quad-colour (RGBA) LED wash light that features 6 LEDs and D-Fi USB compatibility for instant wireless connectivity. It is controllable via master/slave, DMX, standalone modes or the optional point-and-shoot IRC-6 remote. It also features multiple user-configurable settings. SlimPAR Q6 USB creates natural-looking colour temperatures thanks to punchy amber LEDs. Its flicker free operation makes it well suited for video productions. With no moving parts, it is ideal for applications where silence is essential.



Optional IRC-6 Remote and
D-Fi USB Transceiver

SlimPAR Q12 USB

SlimPAR Q12 USB is a low-profile, high-output quad-colour (RGBA) LED wash light with D-Fi USB for instant wireless connectivity. It is controllable via master/slave, DMX, standalone modes or the optional point-and-shoot IRC-6 remote. It also features multiple user-configurable settings. SlimPAR Q12 USB creates natural-looking colour temperatures thanks to punchy amber LEDs. Its flicker free operation makes it well suited for video productions. With no moving parts, it is ideal for applications where silence is essential. Multiple units can be power linked to save time running cables and extension cords. Fits best in the CHS-30 VIP Gear Bag.



Photo by: Victor Cervantes, IVC Producciones, Cartagena, Colombia



- DMX Channels: 3, 5, 9 or 13
- Light Source: 18 LEDs (tri-colour RGB) 3 W (1,050 mA), 50,000 hours
- Beam Angle: 17°
- Illuminance: 4,120 lux @ 2 m
- Input Voltage: 100 to 240 VAC, 50/60 Hz (auto-ranging)
- Weight: 3.6 kg (7.8 lbs)
- Size: 395 x 55 x 260 mm (15.5 x 2.1 x 10.2 in)

- DMX Channels: 6, 8 or 12
- Light Source: 6 LEDs (hex-colour RGBAW+UV) 10 W (2.4 A), 50,000 hours
- Beam Angle: 23°
- Illuminance: 747 lux @ 2 m
- Input Voltage: 100 to 240 VAC, 50/60 Hz (auto-ranging)
- Weight: 1.6 kg (3.4 lbs)
- Size: 211 x 91.5 x 244 mm (8.3 x 3.6 x 9.6 in)

- DMX Channels: 4 or 9
- Light Source: 6 LEDs (quad-colour RGBA) 4 W (0.9 A), 50,000 hours
- Beam Angle: 19°
- Illuminance: 2,684 lux @ 2 m
- Input Voltage: 100 to 240 VAC, 50/60 Hz (auto-ranging)
- Weight: 1.6 kg (3.4 lbs)
- Size: 212 x 92 x 244 mm (8.3 x 3.6 x 9.6 in)

- DMX Channels: 4 or 9
- Light Source: 12 LEDs (quad-colour RGBA) 4 W (0.8 A), 50,000 hours
- Beam Angle: 17°
- Illuminance: 4,960 lux @ 2 m
- Input Voltage: 100 to 240 VAC, 50/60 Hz (auto-ranging)
- Weight: 2.2 kg (4.8 lbs)
- Size: 247 x 92 x 293 mm (9.7 x 3.6 x 11.5 in)





Optional IRC-6 Remote and
D-Fi USB Transceiver

SlimPAR T12 USB

SlimPAR T12 USB is a high output tri-colour (RGB) LED wash light with D-Fi USB compatibility to allow instant wireless control in DMX or master/slave mode. Tri-colour LEDs virtually eliminate distracting multicoloured shadows. Its even, flicker-free output makes it ideal for front light applications and use in video productions. The optional IRC-6 remote can be used to access automated programs and control static colours. Compact enough to fit inside truss sticks, SlimPAR T12 USB is best transported in the CHS-30 VIP Gear Bag.



Photo by Picturesk - Client: DiverZe

- DMX Channels: 3 or 8
- Light Source: 12 LEDs (tri-colour RGB) 3 W (1 A), 50,000 hours
- Beam Angle: 15°
- Illuminance: 3,801 lux @ 2 m
- Input Voltage: 100 to 240 VAC, 50/60 Hz (auto-ranging)
- Weight: 1.8 kg (4 lbs)
- Size: 227 x 84 x 252 mm (8.9 x 3.3 x 9.9 in)



Optional IRC-6 Remote and
D-Fi USB Transceiver

SlimPAR T6 USB

SlimPAR T6 USB is a low profile, high output tri-colour (RGB) LED wash light with D-Fi USB compatibility for wireless master/slave or DMX control. As versatile as it is dependable, this compact fixture is an ideal truss warmer. Because of its even output, it's also an excellent front light, and its flicker-free output makes it an ideal light for broadcast/video applications. Tri-colour LEDs virtually eliminate multicoloured shadows. SlimPAR T6 USB has multiple user-configurable settings, and built-in automated programs are easily accessed via master/slave or the optional IRC-6 remote. Multiple units can be power linked. The CHS-30 VIP Gear Bag is recommended for transport.

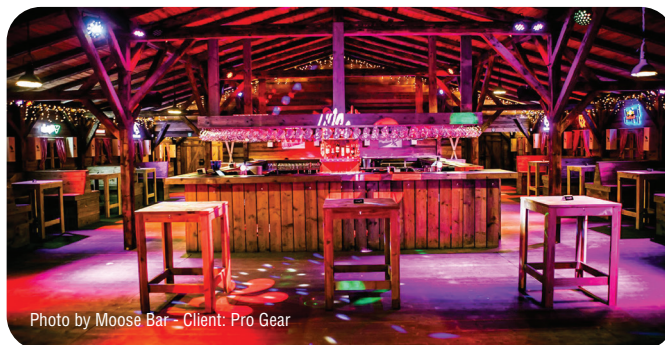


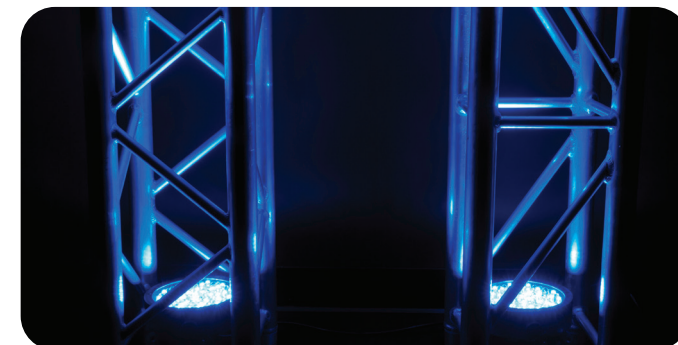
Photo by Moose Bar - Client: Pro Gear

- DMX Channels: 3 or 8
- Light Source: 6 LEDs (tri-colour RGB) 3 W (800 mA), 50,000 hours
- Beam Angle: 15°
- Illuminance: 1,621 lux @ 2 m
- Input Voltage: 100 to 240 VAC, 50/60 Hz (auto-ranging)
- Weight: 1.1 kg (2.4 lb)
- Size: 181 x 84 x 226 mm (7.1 x 3.3 x 9 in)



SlimPAR 56

SlimPAR 56 is a LED wash light in a sleek white or black housing. Powered by 108 red, green and blue LEDs, it blends into any décor with ease. Customise light shows in 3- or 7-channel DMX mode. Fits best in the CHS-SP4 VIP Gear Bag.



- DMX Channels: 3 or 7
- Light Source: 108 LEDs (36 red, 36 green, 36 blue) 0.25 W (20 mA), 50,000 hours
- Beam Angle: 14°
- Illuminance: 1,337 lux @ 2 m
- Input Voltage: 100 to 240 VAC, 50/60 Hz (auto-ranging)
- Weight: 1 kg (2 lbs)
- Size: 241 x 218 x 54 mm (9.5 x 8.5 x 2.1 in)





GigBAR Move

5-in-1 patented lighting system that includes moving heads, derbies, washes, a laser and strobe effect pre-mounted on a single bar

- Totem Mode keeps the moving heads focused on the dance floor
- Built-in UV LEDs illuminate florescent objects and make them pop
- Individual control of each effect ensures your show looks the way you need it to

NEW



IRC-6, Carrying Bag, Tripod, Tripod Carrying Bag and Wireless Footswitch included

GigBAR Move

Ultimate gig lighting convenience, versatility and power is packed into GigBAR Move, a patented 5-in-1 lighting system that includes moving heads, derbies, washes, a laser and strobe effect pre-mounted on a single bar. That means a complete light show is available from this single system that includes a tripod, wireless footswitch and FREE carry bags to ensure quick setup. The moving heads have separate colour and gobo wheels to enhance creative programming possibilities, plus built-in Totem Mode to keep the moving heads focused on the dance floor. Individual control of each effect ensures your show looks the way you need it to and events can be energised with dynamic effects like built-in UV LEDs to illuminate fluorescent objects and make them pop. Controlling GigBAR Move is also easy. Stand-alone control, DMX, wireless IRC-6 remote or wireless footswitch options are all on board. GigBAR Move is also compatible with GigBAR 2 in master/slave mode for huge coverage and dynamic light shows.

- DMX Channels: 3, 17 or 35
- Light Source (pars): 6 LEDs (quad-colour RGB + UV) 3.5 W (1 A), 50,000 hours
- Light Source (strobe): 4 LEDs (dual-colour white + UV) 5 W (1.5 A), 50,000 hours
- Light Source (derby): 6 LEDs (2 red, 2 green, 2 blue) 5 W (1.6 A), 50,000 hours
- Light Source (moving head): 1 LED (cool white) 10 W (2.3 A), 50,000 hours
- Light Source (laser): 650nm/100 mW (red) laser diode, 532 nm/30 mW (green) laser diode
- Beam Angle (moving head): 11°
- Beam Angle (pars): 19°
- Beam Angle (strobe): 8°
- Illuminance (pars): 1,205 lux @ 2 m (per par)
- Illuminance (moving head): 1056 lux @ 2 m (per head)
- Illuminance (strobe): 86 lux @ 2 m (per zone)
- Input Voltage: 100 to 240 VAC, 50/60 Hz (auto-ranging)
- Weight: 10.7 kg (23.4 lbs)
- Size: 1100 x 144 x 449 mm (43 x 5.7 x 17.7 in)

Laser light.
Avoid direct eye exposure.

Class 2M laser product.
Classified per IEC / EN 60825-1:2014
Complies with FDA performance standards for laser products except for deviations pursuant to Laser Notice No. 56, dated May 8, 2019



Laser light.
Avoid direct eye exposure.
Class 3R laser product.
Complies with FDA performance standards for laser products except for deviations pursuant to Laser Notice No. 50, dated June 24, 2007.



IRC-6, Carrying Bag, Tripod, Tripod Carrying Bag and Wireless Footswitch included

GigBAR 2

GigBAR 2 is a powerful patented pack-n-go 4-in-1 lighting system including UV in its wash lights and strobes for better colour mixing and effects. GigBAR 2 includes two LED Derby fixtures, LED wash lights, a laser, and four high-power LED strobe lights all mounted on one bar. The unit features phenomenal built-in automated and sound-activated programs including all four effects. You can easily control the unit from the display, IRC-6 remote control, wireless footswitch or DMX to take your gig to a higher level. Master/slave multiple units and save time running cables and extension cords by power linking multiple units. Get in and get out quickly with the included tripod, wireless footswitch and free carry bag.

- DMX Channels: 3, 11 or 23
- Light Source: Pars: 6 LEDs (quad-colour RGB + UV) 3.5 W (1A), 50,000 hours
- Strobe Bar: 4 LEDs (white & UV) 5 W (1.5A), 50,000 hours
- Derby: 6 LEDs (2 red, 2 green, 2 blue) 5 W (1.6 A), 50,000 hours
- Laser: 650 nm/100 mW (red) laser diode, 532 nm/30 mW (green) laser diode
- Stand Height: 1.5 to 2.5 m (4.8 ft to 8.3 ft)
- Input Voltage: 100 to 240 VAC, 50/60 Hz (auto-ranging)
- Weight: 11.6 kg (25.6 lbs)
- Size: 1185 x 110 x 386.5 mm (46.7 x 4.3 x 15.2 in)

MSR
Best Lighting
Product of
2016

U.S. Patent No. 10,094,542

Patent Pending

Bluetooth®



EFFECTS



Optional IRC-6 Remote and D-Fi USB Transceiver

Tripod, Carrying Bag and Wireless Footswitch included

BTair™ Compatible

4BAR LTBT

4Bar LTBT is a convenient pack-n-go system that, not only sets up and tears down in seconds, but is now easier than ever to control. On-board Bluetooth® wireless technology means you can create and control dynamic lighting looks directly from a smartphone or tablet, without any additional hardware, using the free BTair app. If that weren't convenient enough, 4Bar LTBT also has D-Fi USB compatibility for wireless Master/Slave and DMX control. You can achieve total room or stage coverage with four individually adjustable heads, and you can create even larger coordinated light shows with other 4BAR fixtures in master/slave mode.

- DMX Channels: 3, 5 or 15
- Light Source: 12 LEDs (tri-colour RGB) 3 W, (1 A), 50,000 hours
- Beam Angle: 12°
- Illuminance: 2,382 lux @ 2 m (per pod)
- Input Voltage: 100 to 240 VAC, 50/60 Hz (auto-ranging)
- Weight: 3.5 kg (7.8 lbs)
- Size: 918.1 x 95 x 274.3 mm (36.1 x 3.7 x 10.8 in)
- Bluetooth Version: 4.2
- Max Unobstructed Distance: 150 ft (45.7 m)



NEW

EFFECTS



Optional IRC-6 Remote

Festoon 2 RGB

Festoon 2 RGB is a décor string lighting system that replicates the feel of vintage event lighting. Both the string and individual bulbs are IP54 rated for temporary outdoor use so the colourful warmth of this effect can benefit events indoors or out. Festoon 2 RGB is completely pixel-mappable for ultimate show and programming creativity and the built-in automated programs create complex looks in seconds. The system expands up to 3 strings (60 bulbs) per controller. Access non-DMX control in Standalone mode from the digital display or optional IRC-6.

- DMX Channels: 3, 9, Pixel or Pixel+
- Light Source: 5 SMD LEDs (tri-colour RGB) 0.1 W, (20 mA), 50,000 hours (per bulb)
- Input Voltage: 100 to 240 VAC, 50/60 Hz (auto-ranging)
- IP Rating: IP54
- Weight (Controller): 1.4 kg (3.6 lbs)
- Size (String): 15,000 x 60 x 133 mm (590.5 x 2.4 x 5.2 in)
- Size (Controller): 184 x 203 x 49 mm (7.25 x 8 x 2 in)



NEW



Festoon 2 EXT RGB

Festoon 2 EXT RGB increases the length of the Festoon 2 RGB to achieve longer runs. Set up and connection to an existing Festoon 2 RGB is effortless and Festoon 2 EXT RGB is rated for temporary outdoor use and is perfect for festivals and other exterior events. Festoon 2 EXT RGB fits best in the CHS-50 gear bag.

- Length: 15 m (49 feet)
- IP Rating: IP54
- Weight: 3.6 kg (7.8 lbs)
- Size: 15,000 x 60 x 133 mm (590.5 x 2.4 x 5.2 in)



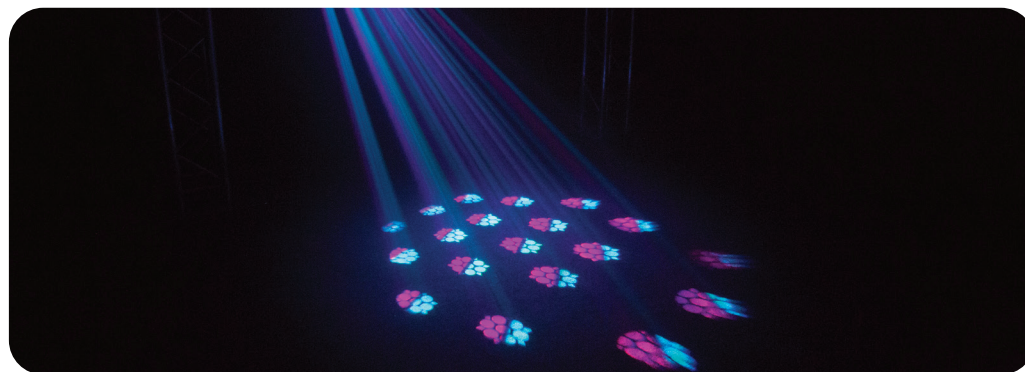
NEW



Optional IRC-6 Remote

Obsession

Get obsessed with breathtaking mid-air effects from Obsession, the compact LED effect light that projects ever-changing, multicoloured rotating gobos. Separate colour and gobo wheels allow you to blanket the room with ever-changing patterns. Generate synchronised shows in Master/Slave mode with built-in automated programs or use other control options like stand-alone, or DMX modes, or optional IRC-6 remote control. Power linking capabilities save time running cables. Obsession fits best in the CHS-40 VIP Gear Bag.



- DMX Channels: 7
- Light Source: 1 LED (cool white) 50 W, (1.7 A), 50,000 hours
- Colours: 13 + white, split colours, continuous scroll at variable speeds
- Gobos: 14 (metal) + open, continuous scroll at variable speeds
- Input Voltage: 100 to 240 VAC, 50/60 Hz (auto-ranging)
- Weight: 2.6 kg (5.6 lbs)
- Size: 320 x 210 x 210 mm (12.6 x 8.26 x 8.26 in)





Optional IRC-6 Remote



Wash FX 2

Wash FX 2 is a multi-purpose effect light with 18 Quad-colour (RGB+UV) LEDs that can be used as a regular wash light or eye-candy effect with 6 chasing zones. Powerful UV LEDs create a psychedelic blacklight effect and provide brilliant colour-mixing capabilities. Wash FX 2 can be controlled with the wireless IRC-6 Remote for wireless triggering or in stand-alone, DMX, IR or master/slave modes. Fits best in the CHS-40 VIP Gear Bag.



Optional IRC-6 Remote



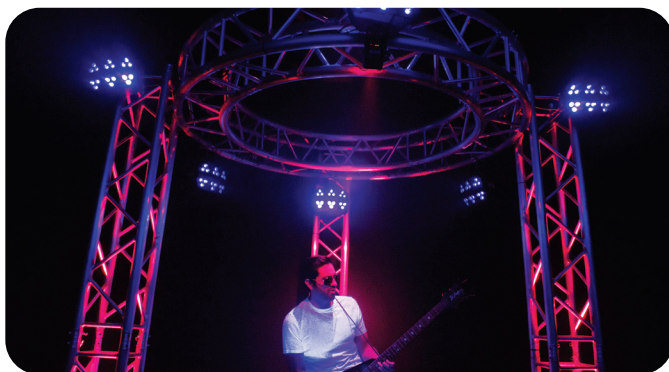
Swarm Wash FX

Swarm Wash FX is a 4-in-1 LED effect fixture that combines an RGBAW rotating derby, RGB+UV wash, red/green laser, and a ring of white SMD strobes. Create an endless array of looks by individually controlling each effect via DMX and master/slave modes, or an optional IRC-6 remote. Other features include automated and sound-activated programs and a user-friendly menu structure. Multiple units can be power linked to save time running cables and extension cords. Fits best in the CHS-40 VIP Gear Bag.

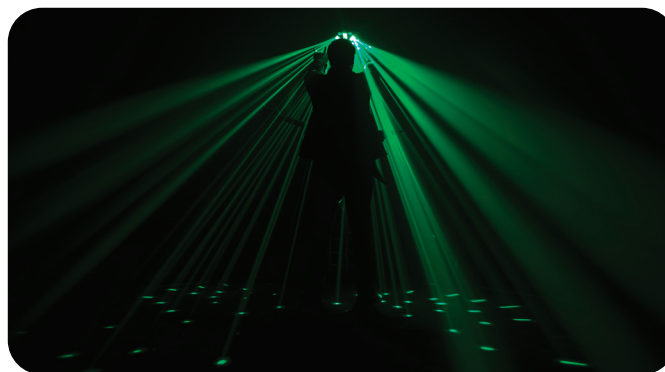


Swarm 5 FX

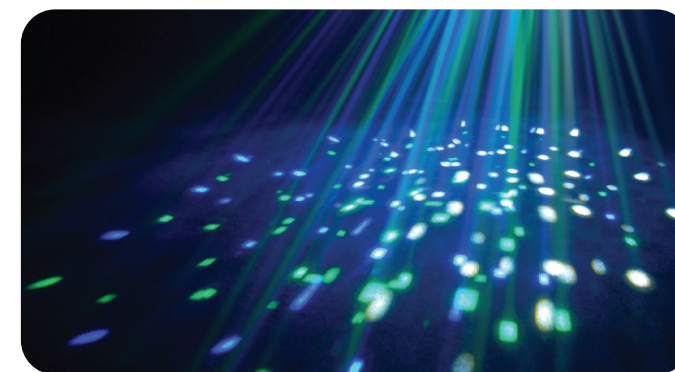
Swarm 5 FX is a 3-in-1 LED effect fixture that combines red and green lasers, white strobe effects, and multicoloured rotating derby effects into one compact setup. Match the look of any event by creating customised light shows with separate colour and program control. Quickly create a look using built-in automated and sound-activated programs, or master/slave and DMX mode. Create a synchronised light show and save time running cables and extension cords by power-linking multiple units. Fits best in the CHS-40 VIP Gear Bag.



- DMX Channels: 3, 4, 8 or 28
- Light Source: 18 LEDs (quad-colour RGB+UV) 6 W, (2 A), 50,000 hours
- Illuminance: 1,795 lux @ 2 m
- Beam angle: 40°
- Field angle: 64°
- Input Voltage: 100 to 240 VAC, 50/60 Hz (auto-ranging)
- Weight: 2.6 kg (5.8 lbs)
- Size: 310 x 140 x 230 mm (12.2 x 5.5 x 9 in)



- DMX Channels: 2 or 18
- Light Source:
 - Swarm: 5 LEDs (1 red, 1 green, 1 blue, 1 amber, 1 white) 2 W (650 mA) 50,000 hours
 - Wash: 8 LEDs (quad-colour RGB+UV) 1.5 W (600 mA), 50,000 hours
 - Strobe: 12 LEDs (white) 1 W (300 mA), 50,000 hours
 - Laser: 650 nm/100 mW (red) laser diode, 532 nm/30 mW (green) laser diode
- Input Voltage: 100 to 240 VAC, 50/60 Hz (auto-ranging)
- Weight: 4.2 kg (9.2 lbs)
- Size: 335 x 332 x 241 mm (13.1 x 13 x 9.4 in)



- DMX Channels: 9
- Light Source:
 - Swarm: 5 LEDs (1 red, 1 green, 1 blue, 1 amber, 1 white) 3 W (300 mA), 50,000 hours
 - Strobe: 8 LEDs (white) 1 W (300 mA), 50,000 hours
 - Laser: 532 nm/50 mW (green) laser diode, 650 nm/100 mW (red) laser diode
- Input Voltage: 100 to 240 VAC, 50/60 Hz (auto-ranging)
- Weight: 4.5 kg (9.8 lbs)
- Size: 248 x 298 x 310 mm (9.75 x 11.7 x 12.2 in)



Laser light.
Avoid direct eye exposure.
Complies with FDA performance standards for laser products except for deviations pursuant to Laser Notice No. 50, dated June 24, 2007.



Laser light.
Avoid direct eye exposure.
Complies with FDA performance standards for laser products except for deviations pursuant to Laser Notice No. 50, dated June 24, 2007.





Optional IRC-6 Remote

Rotosphere Q3

Rotosphere Q3 is an easy to use mirror ball simulator with high-power, quad-colour LEDs. Three LED zones emit up to three different colours simultaneously and the slow speed of rotation creates the perfect atmosphere for slow dancing. Rotosphere Q3 is easily controllable with the optional IRC-6 Remote and the digital display even allows you to set a colour and rotation speed without any controller. Mount Rotosphere Q3 to truss with the included bracket or place it on a stand as a centerpiece.



Optional IRC-6 Remote

Mini Kinta IRC

Mini Kinta is fitted with 3 W LEDs to punch through nearly any ambient lighting or fog. Filling a room floor to ceiling with razor sharp beams, it delivers an output that surpasses those of much larger derby effects. DMX controllable, it also features exciting built-in programs. An optional IRC-6 Remote is available for wireless control. Fits best in the CHS-30 VIP Gear Bag.



Optional IRC-6 Remote

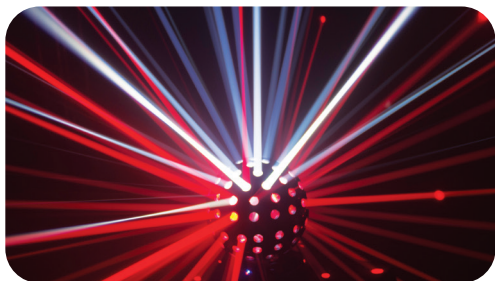
Kinta FX

Kinta FX combines an LED derby effect, laser and SMD strobe in one compact fixture. These effects can be coordinated to create a variety of exciting looks that feature multicoloured derby beams, dynamic strobes and chases plus hundreds of sharp red and green laser beams. Control this versatile fixture easily via DMX, master/slave, optional IRC-6 Remote or its digital display. Multiple units can be power linked to save time running cables and extension cords. Fits best in the CHS-30 VIP Gear Bag.

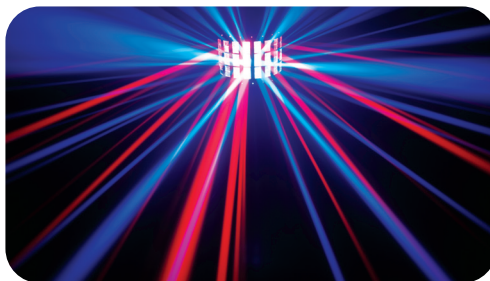


BOB LED

BOB LED is the hottest simulated flame effect light on the market, but generates no heat. This LED powered, duty-cycle free fixture perfectly simulates a flickering cauldron. BOB LED can either stand on included legs or hang from an included chain.



- DMX Channels: 3, 9, or 19
- Light Source: 5 LEDs (quad-colour RGBW) 7 W, (2.4 A), 50,000 hours
- Coverage Angle: 360°
- Input Voltage: 100 to 240 VAC, 50/60 Hz (auto-ranging)
- Weight: 3.9 kg (8.6 lbs)
- Size: 266 x 319 x 419 mm (11 x 13 x 17 in)

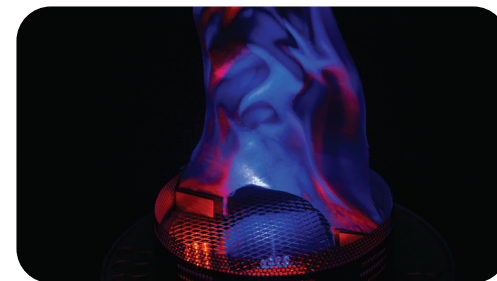


- DMX Channels: 4
- Light Source: 4 LEDs (1 red, 1 green, 1 blue, 1 white) 3 W (980 mA), 50,000 hours
- Input Voltage: 100 to 240 VAC, 50/60 Hz (auto-ranging)
- Weight: 1.6 kg (3.4 lbs)
- Size: 261 x 186.5 x 186.8 mm (10.3 x 7.3 x 7.4 in)



- DMX Channels: 2 or 9
- Light Source: Kinta: 4 LEDs (1 red, 1 green, 1 blue, 1 white) 7.5 W (2.4 A), 50,000 hours
Strobe: 16 SMD LEDs (white) 5 W (1.6 A), 50,000 hours
Laser: 650 nm/100 mW (red) laser diode, 532 nm/30 mW (green) laser diode
- Input Voltage: 100 to 240 VAC, 50/60 Hz (auto-ranging)
- Weight: 1.7 kg (3.8 lbs)
- Size: 187 x 261 x 187 mm (7.4 x 10.3 x 7.4 in)

Laser light.
Avoid direct eye exposure.
Complies with FDA performance standards for laser products except for deviations pursuant to Laser Notice No. 50, dated June 24, 2007.



- Light Source: 66 LEDs (54 orange, 12 blue) 0.25 W (20 mA), 100,000 hours
- Input Voltage: 120 VAC, 60 Hz or 230 VAC, 50 Hz
- Weight (with legs): 2.3 kg (5.1 lbs)
- Size (with legs): 455 x 455 x 775 mm (17.5 x 17.5 x 30.5 in)
- Weight (with chains): 2.2 kg (4.8 lbs)
- Size (with chains): 280 x 280 x 737 mm (11 x 11 x 29 in)



NEW



IRC-6 Remote Included



FC

GOBO PROJECTORS

Freedom Gobo IP

Inclement weather? No power? No problem! Effortlessly customise special event spaces with monograms, logos, and more indoors or outdoors with Freedom Gobo IP. A member of the Freedom family of products, Freedom Gobo IP is a 100% TRUE wireless, battery-operated cool white LED Gobo Projector with built-in D-Fi transceiver. The unit features a rugged die cast aluminum housing that is temporary outdoor-rated and robust enough to repel water, snow, dirt, and sand for all-weather applications. Convenient, wireless non-DMX control is possible using the IRC-6 remote. Freedom Gobo IP has built-in dimming curves for smooth LED fading and is fan-less for silent operation.

- DMX Channels: 1 or 3
- Light Source: 1 LED (cool white) 16 W, (1.2 A), 50,000 hours
- Colour Temperature: 6000 K
- Gobo Size (E): 37.5 mm outside, 24.0 mm image, 1.0 mm max thickness
- Beam Angle (narrow): 16°
- Beam Angle (wide): 31°
- Illuminance (narrow): 3135 lux @ 2 m
- Illuminance (wide): 1002 lux @ 2 m
- Maximum Run Time: 8 hrs
- IP Rating: IP-54
- Weight: 2.5 kg (5.4 lbs)
- Size: 293 x 118 x 201 mm (11.5 x 4.6 x 7.9 in)





spotlights



Pinspot Bar

High-output bar with 6 independent pinspots designed to replicate traditional incandescent lamps

- Independent control of each head offers true flexibility and programming capabilities
- High-output bar with 6 independent pinspots designed to replicate traditional incandescent lamps

NEW



Optional IRC-6 Remote and D-Fi USB Transceiver

Pinspot Bar

From creating subtle glows for appetizing buffets to lighting inspiring exhibits and highlighting special event elements, harness pinspotting power with Pinspot Bar. Pinspot Bar is a high-output bar with 6 independent pinspots designed to replicate traditional incandescent lamps. Independent control of each head offers true flexibility and programming capabilities. Achieve a clean and elegant look for any upscale event with only a single PowerCon-compatible power input—no messy cables—along with power linking capabilities that save time running cables to other fixtures. Pinspot Bar includes various beam diffusers and CTO filters to help achieve your desired look. A pair of included Omega brackets allow for multiple mounting options including pipe and drape. Control Pinspot Bar via the on-board digital display, DMX, wireless IRC-6 remote, or D-Fi USB dongle.

- DMX Channels: 1, 6 and 11
- Light Source: 6 LEDs (warm white) 15 W, (3.6 A), 50,000 hours
- Illuminance: 7,707 lux @ 2 m (per pod)
- Beam Angle: 5°
- Colour Temperature: 4000 K
- CRI: 81
- Input Voltage: 100 to 240 VAC, 50/60 Hz (auto-ranging)
- Weight: 4.3 kg (9.4 lbs)
- Size: 1000 x 119 x 131 mm (39 x 4.6 x 5 in)



2 Omega Brackets Included

Includes 10° and 25° diffusers
2700K filter



IRC-6 Remote Included

4 EZpins, multi-charger, and Carry Bag Included

EZpin Pack 4

Accent lighting and pin spotting with battery-powered EZpin Pack 4 makes lighting centerpieces, cakes, and other event space focal-points easier than ever. EZpin Pack 4 bundles four EZpin fixtures and one IRC-6 remote into an easily transportable VIP gear bag; perfect for mobile entertainers and event producers. Each light has a magnetic base that affixes to most metal surfaces, eliminating the need for clamps. No metal surfaces? No problem! Easily attach the lights to drop ceiling supports or air wall frames using CHAUVET DJ Scissor Clip.



- Light Source: 1 LED (cool white) 2 W, (725 mA), 50,000 hours
- Beam Angle: 3°
- Illuminance: 3,112 lux @ 2 m
- Maximum Run Time: up to 10 hours
- Recharge Time: 7 hours
- Colour Temperature: 7100 K
- Included gels: 2700 K and 4000 K
- Input Voltage: 5 VDC, 2.4 A (external power supply: 100 to 240 VAC, 50/60 Hz)
- Bracket Mounting Hole: M10
- Weight: 0.3 kg (0.6 lbs)
- Size: 189 x 70 x 53 mm (7.4 x 2.7 x 2.1 in)

2 variable white gels Included: 2700 K and 4000 K



IRC-6 Remote Included

EZBar

EZBar is a battery-powered bar with three independent warm white pin spots designed to accent event space elements. Each of the three lights can be manually adjusted to different angles to light a variety of subjects. The rechargeable lithium battery allows the fixture to be placed anywhere and provides up to ten hours of run time. The bar features a strong magnet for flexible mounting options to most metal surfaces. An optional wireless IRC-6 remote can set the dimmer and turn the fixture on or off. EZBar also includes wide-angle diffusers for short-throw applications.



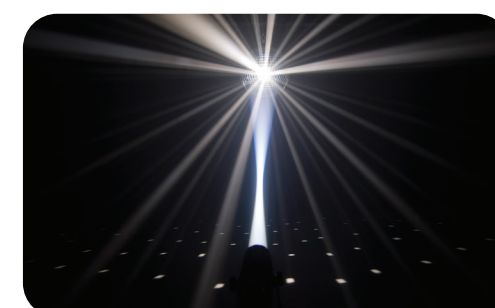
- Light Source: 3 LEDs (warm white) 5 W, (1.3 A), 50,000 hours
- Beam Angle: 5° (per pod)
- Field Angle: 10° (per pod)
- Illuminance: 3,898 lux @ 2 m (per pod)
- Maximum Run Time (all on): up to 8 hours
- Recharge Time: 6 hours
- Colour Temperature: 4000 K
- Input Voltage: 15 VDC, 1.6 A (external power supply: 100 to 240 VAC, 50/60 Hz)
- Threaded Clamp Hole: M10
- Weight: 1.9 kg (4.2 lbs)
- Size: 358 x 127 x 106 mm (14 x 5 x 4 in)

10° and 25° diffusers Included



LED Pinspot 2

LED Pinspot 2 includes two front focal lens options to produce hard-edged beams for a variety of applications. It weighs less than a pound and is powered by a 3 W white LED. The auto switching power supply allows the fixture to adapt to the voltage provided, ranging from 100 V to 240 V.



- Light Source: 1 LED (cool white) 3 W (700 mA), 50,000 hours
- Beam Angle: 5° (installed), 9° (included)
- Illuminance (5°): 5,700 lux @ 2 m
- Illuminance (9°): 1,335 lux @ 2 m
- Input Voltage: 100 to 240 VAC, 50/60 Hz (auto-ranging)
- Weight: 0.4 kg (0.8 lbs)
- Size: 200 x 110 x 150 mm (7.87 x 4.33 x 5.9 in)

Colour Gels Included





Optional D-Fi USB Transceiver

**EVE E-100Z**

EVE E-100Z is a powerful spot fixture featuring sharp pattern projection with a 100 W warm white LED light source. Features D-Fi USB compatibility for wireless master/slave or DMX control. This versatile fixture works with metal or glass gobos to create incredible gobo or pattern details. The manual zoom and framing shutters make it simple to control beams.

- DMX Channels: 1 or 3
- Light Source: 1 LED (warm white) 100 W (2.3 A), 50,000 hours
- Colour Temperature: 3,500 K
- Gobo Size: M
(66 mm outside, 48 mm image, 2 mm max. thickness)
- Zoom Angle (manual): 14° to 30°
- Illuminance (14°): 15,100 lux @ 2 m
- Illuminance (30°): 3,800 lux @ 2 m
- Input Voltage: 100 to 240 VAC, 50/60 Hz (auto-ranging)
- CRI: 80
- Weight: 5.7 kg (12.6 lbs)
- Size: 611 x 183 x 430 mm (24 x 7.2 x 16.9 in)



Optional D-Fi USB Transceiver

**EVE E-50Z**

EVE E-50Z is an LED ellipsoidal that shines a hard-edged, warm white spot and features D-Fi USB compatibility for wireless master/slave or DMX control. Manual zoom gives you the flexibility to project from any distance and its framing shutters let you easily alter and control the projected beam. EVE E-50Z includes holders for glass and steel gobos as well as a gel frame. You can operate EVE E-50Z in standalone mode eliminating the need for DMX control and you can save time running extension cords by power linking multiple units.

- DMX Channels: 1 or 3
- Light Source: 1 LED (warm white) 50 W, (1.3 A), 50,000 hours
- Colour Temperature: 3,500 K
- Gobo Size: D
(53.3 mm outside, 43 mm image, 2 mm max. thickness)
- Zoom Angle (manual): 20° to 39°
- Illuminance (20°): 7,910 lux @ 2 m
- Illuminance (39°): 2,710 lux @ 2 m
- Input Voltage: 100 to 240 VAC, 50/60 Hz (auto-ranging)
- Weight: 4.2 kg (9.2 lbs)
- Size: 480 x 157 x 381 mm (18.9 x 6.2 x 15 in)



Stand Included

**LED Followspot 75ST**

LED Followspot 75ST sheds the spotlight precisely where it needs to be with a focused hard-edge beam and smooth LED dimming. Equipped with a 75 W LED, it features a single gobo slot to project crisp patterns and can also perform electronic strobe effects. It is easy to set up and tear down, and comes with a free tripod. It's the perfect choice as an entry-level followspot for stages, school functions and events where focus needs to be on a speaker or guest of honor.

- DMX Channels: 3
- Light Source: 1 LED (cool white) 75 W (18 A) 50,000 hours
- Zoom Angle (manual): 14° to 20°
- Gobo Size: 23.7 mm outside, 21.3 mm image, 1 mm max. thickness
- Colours: 7 + white
- Illuminance (14°): 8,140 lux @ 2m
- Illuminance (20°): 4,650 lux @ 2 m
- Input Voltage: 120/230 VAC, 50/60 Hz (switchable)
- Weight: 6 kg (13.3 lbs)
- Size: 560 x 276 x 292 mm (22 x 10.8 x 11.5 in)



Colours



Stand Included

**LED Followspot 120ST**

LED Followspot 120ST is a portable, LED followspot that emits a tight beam powered by a bright 120 W LED to highlight actors at far distances. Built-in CTO filter lowers colour temperature to match tungsten lamps. Control options include DMX and manual modes and you can simplify fading with smooth LED dimming. Focus the light where it is needed using the mechanical iris to reduce the beam's diameter and deliver silent operation with fast electronic strobe and no moving parts. Set up and tear down in seconds with the included tripod.

- DMX Channels: 3
- Light Source: 1 LED (cool white) 120 W (30.6 A), 50,000 hours
- Zoom Angle (manual): 14° to 20°
- Colours: 7 + white
- Illuminance (14°): 16,060 lux @ 2 m
- Illuminance (20°): 7,900 lux @ 2 m
- Input Voltage: 100 to 240 VAC, 50/60 Hz (auto-ranging)
- Weight: 7.5 kg (16.6 lbs)
- Size: 582 x 279 x 341 mm (22.9 x 11 x 13.4 in)



Colours





Included expansion bracket allows quick attachment of a second unit



Optional D-Fi USB Transceiver

Shocker 2

Shocker 2 is a punchy dual zone blinder with warm white 85 W COB LEDs. Perfect for theatrical productions, concerts, dance floors and more, Shocker 2 has an included expansion bracket that allows quick attachment of a second unit to create a 4-head blinder. Adjustable pulse width modulation (PWM) control is on board to eliminate flicker on camera. Shocker 2 has PowerCON®-compatible power input/output connections for power linking up to 4 fixtures and flexible control options with onboard 3- and 5-pin DMX connectors.

- DMX Channels: 1, 2, 4, 7 or 8
- Light Source: 2 COB LEDs (warm white) 85 W, (3.6 A), 50,000 hours
- Beam Angle: 51°
- Colour Temperature: 3200 K
- Illuminance: 1,080 lux @ 2 m (one pod), 2,397 lux @ 2m (both pods)
- Input Voltage: 100 to 240 VAC, 50/60 Hz (auto-ranging)
- Weight: 4.7 kg (10.4 lbs)
- Size: 375 x 116 x 153 mm (14.75 x 4.6 x 6 in)





Hurricane Bubble Haze

Multi-purpose atmospheric machine emits bubbles, haze or haze-filled bubbles

Patent Pending

- Gravity-fed bubble reservoir recirculates unused bubble fluid reducing fluid consumption
- Variable-speed loft fan pushes bubbles up into the air
- Built-in cleaning function increases machine longevity and reduces clogs

atmospheries



Wireless Remote Included

Geyser P7

Geyser P7 is a dynamic pyrotechnic-like effect that creates thrilling bursts of fog lit with seven 9 W penta-colour (RGBA+UV) LEDs for endless colour capabilities. Two LED zones can create two-tone bursts of fog without the use of any toxic chemicals, fire or heavy CO2 canisters. Control the unit from the built-in DMX or the included Geyser wireless remote and assign different colours to each of the remote's buttons. The onboard digital display allows for easy configuration even in fast-paced or dark environments.



Photo by: AJR

- DMX Channels: 15
- Output: 17,000 cfm
- Light Source: 7 LEDs (penta-colour RGBA+UV) 9 W (3 A), 50,000 hours
- Tank Capacity: 0.7 gal (2.5 l)
- Input Voltage: 120 VAC, 60 Hz or 230 VAC, 50 Hz
- Weight: 8.5 kg (18.16 lbs)
- Size: 400 x 362 x 210 mm (15.7 x 14.2 x 8.2 in)



Optional WMS Transmitter

Wireless Remote Included

Non-toxic, non-flammable paper confetti refills
(Not Included)



Funfetti Shot

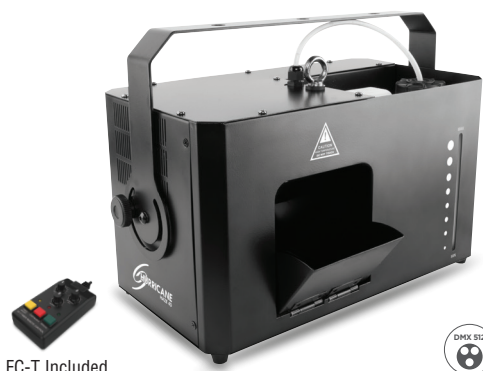
Funfetti Shot is a wirelessly controlled confetti launcher. With easy setup by one person, it sends powerful blasts of confetti flying for distances up to 9 m (30') and covering an area as large as 50 m² (540 square feet). Each powerful burst of confetti lasts as long as 25 seconds. The launcher can be controlled in manual, wireless and DMX modes. For added versatility, it works with a variety of confetti types including UV. A double-bracketed yoke allows easy floor mounting or hanging. Safe and convenient, Funfetti Shot does not rely on compressed air or CO2.



- DMX Channels: 1
- Maximum Confetti Capacity (FRC and FRU Confetti): 0.25 kg (0.5 lbs)
- Maximum Continuous Launch Duration: 25 s
- Maximum Throw Distance: 9 m (30 ft)
- Average Coverage Area: 50 m² (540 ft²)
- Input Voltage: 120 VAC, 60 Hz or 230 VAC, 50 Hz
- Weight: 6.2 kg (13.6 lbs)
- Size: 284 x 228 x 553 mm (11.2 x 9 x 21.8 in)





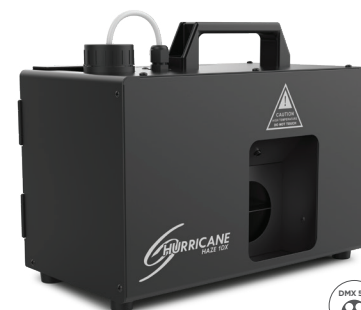


FC-T Included

Hurricane Haze 4D

Hurricane Haze 4D is a low profile hazer with an adjustable scoop to direct the haze and a discreet fan. It can be controlled with the included wired timer remote and built-in DMX.

- DMX Channels: 2
- Output: 4,300 cfm
- Tank Capacity: 3.75 l (1 gal)
- Input Voltage: 120 VAC, 60 Hz or 230 VAC, 50 Hz
- Compatible Fluids: HF5
- Weight: 6 kg (13.2 lbs)
- Size: 277 x 396 x 245 mm (11 x 15.5 x 9.6 in)



Hurricane Haze 1DX

Hurricane Haze 1DX is a compact and lightweight hazer that creates a thin atmosphere to enhance any light show. It features a silent running fan that allows the unit to be used in any environment. Its built-in display lets you quickly and easily set DMX functions and haze standalone settings. Hurricane Haze 1DX has a small footprint allowing the machine to be placed in any location.

- DMX Channels: 1
- Output: 3000 cfm
- Tank Capacity: 1.5 l (0.4 gal)
- Input Voltage: 120 VAC, 60 Hz or 230 VAC, 50 Hz
- Compatible Fluids: HF5
- Weight: 3.3 kg (7.2 lbs)
- Size: 278 x 150 x 223 mm (11 x 6 x 9 in)



Optional FC-T Receiver and WMS Transmitter

Wired and Wireless Remote Included

Hurricane 1000

- Tank Capacity: 1 l (0.26 gal)
- Input Voltage: 120 VAC, 60 Hz or 230 V, 50 Hz
- Output: 10,000 cfm
- Compatible Fluids: FF5
- Weight: 2.7 kg (5.8 lbs)
- Size: 301 x 225 x 208 mm (11.9 x 8.9 x 8.2 in)



Optional FC-W, FC-M Receiver and WMS Transmitter

FC-T Included

Hurricane 1200

- Tank Capacity: 1.0 l (0.26 gal)
- Input Voltage: 120 VAC, 60 Hz or 230 VAC, 50 Hz
- Output: 18,000 cfm
- Compatible Fluids: FF5
- Weight: 2.9 kg (6.4 lbs)
- Size: 286 x 235 x 209 mm (11.3 x 9.3 x 8.2 in)



Optional FC-W, FC-M Receiver and WMS Transmitter

FC-T Included

Hurricane 1600

- DMX Channels: 1
- Tank Capacity: 2.4 l (0.63 gal)
- Input Voltage: 120 VAC, 60 Hz or 230 V, 50 Hz
- Output: 25,000 cfm
- Compatible Fluids: FF5
- Weight: 6 kg (13.2 lbs)
- Size: 348 x 312 x 253 mm (13.7 x 12.3 x 10 in)



Remote Included

Hurricane 700

- Tank Capacity: 0.6 l (0.2 gal)
- Input Voltage: 120 VAC, 60 Hz or 230 V, 50 Hz
- Output: 1,500 cfm
- Compatible Fluids: FF5, CF250
- Weight: 1.4 kg (3 lbs)
- Size: 218 x 149 x 167 mm (8.6 x 5.9 x 6.6 in)

Cumulus

Cumulus is an event ready low-lying fog machine that creates thick clouds that hug the floor without the need for dry ice. The onboard ultrasonic agitator converts distilled water into a thin mist. The unit's fast heat up time allows for quick operation and fog on demand. It's rugged flight case makes transportation a breeze and locking casters prevent accidental rollaways. Cumulus can be controlled with the on board digital display or DMX.

- DMX Channels: 2
- Tank Capacity: Fog Fluid Tank Capacity: 3.25 l (0.9 gal)
- Water Tank Capacity: 7.6 l (2 gal)
- Heat-up Time: 3 min
- Input Voltage: 120 VAC, 60 Hz or 230 VAC, 50 Hz
- Fog Fluid Consumption: 12 ml/min
- Water Consumption: 120 ml/min
- Compatible Fluids: HFG, FJU, HDF, QDF
- Weight: 26.7 kg (58.9 lbs)
- Size: 625 x 409 x 453 mm (25 x 16 x 18 in)



Nimbus

Nimbus is an event ready dry ice machine that delivers thick, low-lying clouds of fog that hugs the floor and dissipates without rising. It provides an outstanding return on investment to rental houses and event producers, and is ideally suited for a wedding party's first dance. This powerful machine heats enough water to create fog from 10 pounds (4.5 kg) of dry ice to provide six minutes of run time. Output and flow are easily controlled, due to an adjustable multi-level control arm. Dual heaters ensure faster heat-up and recycle times. A low water sensor increases safety.

- Tank Capacity: 17 l (4.5 gal)
- Heat-up Time (single element): 50 min
- Heat-up Time (dual element): 30 min
- Reheat Time (single element): 30 min
- Reheat Time (dual element): 15 min
- Average Runtime: 6 min
- Input Voltage: 120 VAC, 60 Hz or 230 VAC, 50 Hz
- Dry Ice Capacity: 4.5 kg (10 lbs)
- Weight (full): 34 kg (75 lbs)
- Size: 513 x 465 x 470 mm (20 x 18 x 19 in)



Nimbus Cart

Easily transport your Nimbus dry ice machine to and from the car and around the dance floor.

- Load Capacity: 34 kg (75 lbs)
- Weight: 2.7 kg (5.8 lbs)
- Size: 426 x 379 x 132 mm (16.7 x 14.9 x 5.5 in)

NEW

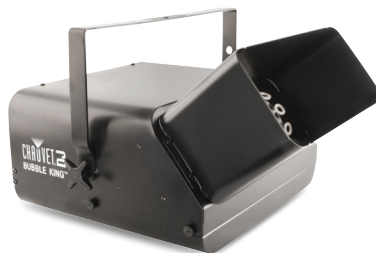


Hurricane Bubble Haze

Hurricane Bubble Haze takes party atmospherics to new levels. It's a haze machine. It's a bubble machine. It's both at the same time! This multi-purpose patent pending atmospheric machine emits bubbles, haze, or even haze-filled bubbles, and its always-ready technology lets the unit run continuously to keep the party going. Hurricane Bubble Haze features a gravity-fed bubble reservoir that recirculates unused bubble fluid reducing fluid consumption. A built-in cleaning function increases machine longevity and reduces clogs. Hurricane Bubble Haze is compatible with HF5 and BF5 fluid.



- DMX Channels: 4
- Tank Capacity: 0.8 l (0.21 gal) each
- Input Voltage: 120 VAC, 60 Hz or 230 VAC, 50 Hz
- Output: 10,000 cfm
- Compatible Fluids (haze): HF5
- Compatible Fluids (bubble): BF5
- Weight: 9.2 kg (20.2 lbs)
- Size: 310 x 312 x 394 mm (12.2 x 12.3 x 15.5 in)



Bubble King (B-550)

Bubble King is the biggest name in bubble effects, featuring three double wands, a manual bubble button, and extremely high output. This is the perfect machine when you need bubbles for a large area.

- Tank Capacity: 1.7 l (56 oz)
- Input Voltage: 120 VAC, 60 Hz or 230 VAC, 50 Hz
- Weight: 5.9 kg (13.2 lbs)
- Size: 483 x 381 x 305 mm (19 x 15 x 12 in)



Atmospheric Remotes



Wired Timer Remote (FC-T)

Compatible with Hurricane 1800 Flex, Hurricane Haze 4D, Hurricane Haze 2D, Hurricane 1600, Hurricane 1302, Hurricane 1200, Hurricane 1000 and SM-250.



Wireless Motion Sensor (WMS)

Compatible with Geyser P5, Geyser P7, Funfetti Shot, Hurricane 1800 Flex, Hurricane 1600, Hurricane 1302, Hurricane 1200, Hurricane 1000, SM-250.



Wireless Remote (FC-W)

Compatible with Hurricane 1800 Flex, Hurricane 1600, Hurricane 1302, Hurricane 1200, Hurricane 1000, Funfetti Shot, SM-250.

Atmospheric Fluids



LLF5

Low Lying Fog Fluid



BF5

High Performance Bubble Fluid



FF5

High Performance Fog Fluid



HF5

High Performance Haze Fluid



QDF5

Quick Dissipating Fluid



CF250

Fog Machine Cleaning Fluid

ATMOSPHERICS

Hex-LED Technology



Create and mix unique UV colours

The trillion colour difference

A CHAUVET DJ Hex-LED fixture is much more than a blacklight. It creates not only intense Ultra Violet light but also superb colours and white uplighting washes.



FC

Freedom Par Hex-4
(See page 14)



Freedom Flex H4 IP
(See page 14)



FC

Freedom H1
(See page 15)



SlimPAR Pro H USB
(See page 25)



SlimPAR H6 USB
(See page 32)



Optional IRC-6 Remote and
D-Fi USB Transceiver

COREpar UV USB

COREpar UV USB is a compact UV wash with COB (chip-on-board) LED technology, it offers D-Fi USB compatibility for wireless master/slave or DMX control. It includes a separate magnetic lens to provide the flexibility to go from an ultra-wide wash to a narrow beam in seconds. High frequency LED dimming achieves smooth LED fades and ensures a flicker-free performance in video applications. Multiple control options include DMX, master/slave and sound activation modes as well as wireless control thanks to D-Fi USB compatibility.

- DMX Channels: 1 or 5
- Light Source: 1 COB LED (UV) 70 W (1.5 A), 50,000 hours
- Coverage Angle: 100° without Fresnel lens, 50° with Fresnel lens
- Input Voltage: 100 to 240 VAC, 50/60 Hz (auto-ranging)
- Weight: 2.1 kg (4.6 lbs)
- Size: 139 x 200 x 253 mm (5.5 x 7.9 x 10 in)



Optional D-Fi USB Transceiver

EVE P-150 UV

EVE P-150 UV is a brawny blacklight cannon fitted with 40 UV LEDs emitting 150 watts of blacklight power. The unit is designed without a fan and its silent operation combined with its flicker-free output make it ideal for video use. EVE P-150 UV is D-Fi USB compatible giving users the option to control the light wirelessly in master/slave mode or wireless DMX control. 25° and 45° magnetic lenses to adjust the beam are included along with a gel frame holder and accessory slot for optional barn doors.

- DMX Channels: 1 or 5
- Light Source: 40 LEDs (UV) 150 W total, (2 A), 50,000 hours
- Coverage Angle: (narrow lens): 25° (no lens): 35° (wide lens): 45°
- Input Voltage: 100 to 240 VAC, 50/60 Hz (auto-ranging)
- Weight: 3.5 kg (7.6 lbs)
- Size: 220 x 245 x 305 mm (8.6 x 9.65 x 12 in)





BTair™

Light Easier



FlareCON

Light Smarter

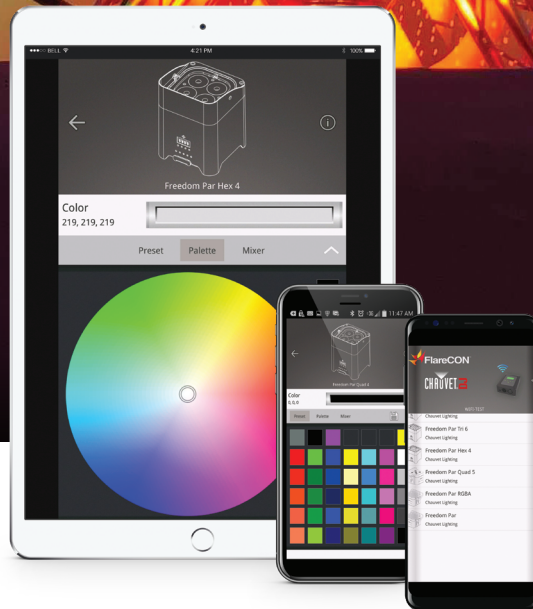


Patent Pending

BTair™

Control right from your phone or tablet straight to your lights!
No additional hardware needed!

- Bluetooth compatibility: V4.2 (or greater)
- Minimum Operating System (Android): Lollipop (V5)
- Minimum Operating System (Apple): iOS 8



FlareCON

FlareCON app is available for both Android and iOS® in both phone and tablet versions. The FlareCON Air can also connect directly to a DMX controller to send wireless signals out to an unlimited number of D-Fi lights or receivers.



Credit: Sounds Alive Entertainments Lincoln



NEW

FlareCON Air 2

FlareCON Air 2 is a Compact, 100% TRUE wireless Wi-Fi™ receiver and wireless D-Fi transmitter in a single unit. The unit has a built-in battery, generates its own Wi-Fi™ network, and can be used anywhere with no internet or hotspot needed! FlareCON Air 2 is compatible with both Android™ and Apple® operating systems for smartphones and tablets. Wirelessly control an unlimited number of D-Fi-ready fixtures and receivers simultaneously. You can even control non-D-Fi-enabled fixtures using the included cable adapter. Navigation of FlareCON Air 2 is easy with the on-board text readout and OLED digital display. The unit is fully FCC/RTTE compliant and has a built-in hook and loop fastener for direct mounting to truss.

- DMX Channels: 512
- Operating Frequency: 2.412 to 2.484 GHz
- Antenna connection: RP-SMA
- Max Unobstructed Distance (Wi-Fi™): 100 ft (30.5 m)
- Max Unobstructed Distance (D-Fi™): 600 ft (183 m)
- Input Voltage: 5 VDC, 1.6 A (external power supply: 100 to 240 VAC, 50/60 Hz)
- Weight: 0.3 kg (0.6 lbs)
- Size: 158 x 83 x 24 mm (6.2 x 3.3 x 0.9 in)



FCC



ShowXpress

ShowXpress is a free software program that turns almost any computer into a lighting console. It allows direct control over simple PAR cans to the most complex moving lights. All you need is a computer (PC or Mac), a ShowXpress interface and ShowXpress software. The software is now available as an app for your smartphone. You can take ShowXpress on the road and go mobile! Pre-configured for RGB, RGBA, RGBW, and RGBWA fixtures, Pixels makes the creation of show-stopping effects fast and easy, and is included free as a part of your ShowXpress software. For more information go to:

<https://www.chauvetdj.com/showxpress/>



NEW

Xpress-Rack 1024

Xpress-Rack 1024 is a rackmount DMX interface for ShowXpress™ software. The unit controls 2 DMX universes and unlocks an additional ArtNet universe (3 universes total). Easily store and play back 16 shows without a computer using onboard buttons or included remote. Trigger up to 8 scenes remotely using the Phoenix contacts. Xpress-Rack 1024 features a built-in clock and calendar which triggers scenes automatically. Xpress-Rack 1024 is hot-swappable and automatically re-connects within seconds. Compatible with Windows® and Mac OS X systems. Connect multiple interfaces to control additional universes. Both outputs are electrically and optically isolated.

- Input Voltage: 5 V USB
- Weight: 1.3 kg (2.8 lbs)
- Dimensions: 483 x 76 x 44 mm (19 x 3 x 1.75 in)



NEW

Xpress-1024

Harness the power of ShowXpress lighting control software with Xpress-1024 DMX interface. This self-contained aluminum unit is compatible with both Windows and Mac OS X systems, but will easily store and play back 1 show without a computer. Xpress-1024 controls two DMX universes and unlocks an additional ArtNet universe (3 universes total). The interface is hot-swappable and automatically re-connects within seconds. Connect multiple interfaces to control additional universes. Xpress-1024 has built-in optical isolation and ground loop protection circuits.

- DMX Channels: 1024 + 512 via ArtNet
- Input Voltage: 5 V USB
- Weight: 0.2 kg (0.4 lbs)
- Dimensions: 110 x 66 x 45 mm (4.3 x 2.6 x 1.8 in)

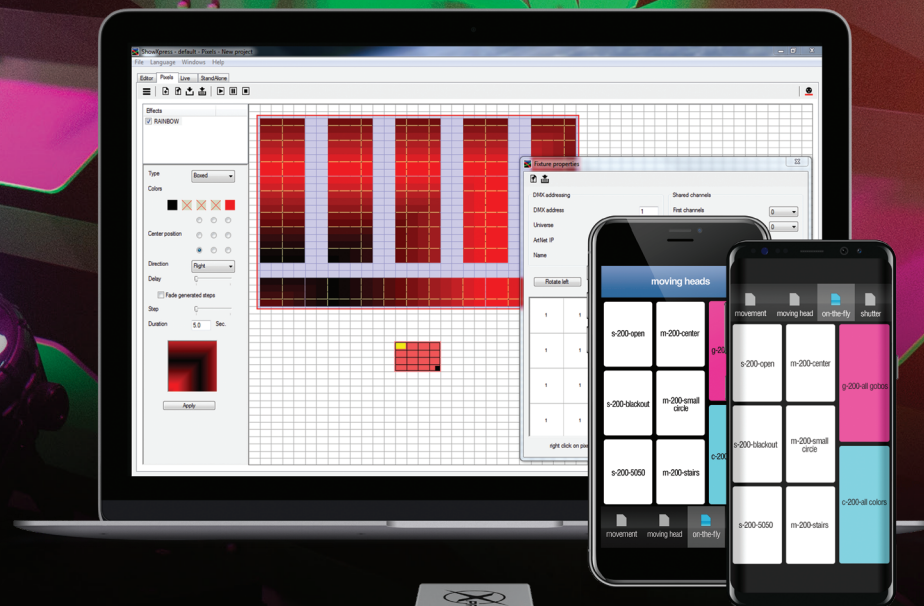


NEW

Xpress-512S

Xpress-512S is a powerful DMX interface that lets you control ShowXpress lighting control software on either Windows® and Mac OS X systems. You can easily store and play back 1 show without a computer. This self-contained, aluminum unit controls up to two DMX universes – one full DMX universe and an additional ArtNet universe. Adding additional universes is easy by connecting additional interfaces. Xpress-512S is hot-swappable and automatically re-connects within seconds. The unit also has built-in electrostatic discharge and ground loop protection circuits.

- DMX Channels: 512 + 512 via ArtNet
- Input Voltage: 5 V USB
- Weight: 0.1 kg (0.2 lbs)
- Dimensions: 74 x 35 x 35 mm (2.9 x 1.4 x 1.4 in)



D-Fi USB

The world's first and only
D-Fi USB transceiver



- Operating Frequency: 2.412 to 2.484 GHz
- Max. Unobstructed Distance: 165 ft (50 m)
- Weight: 1.1 oz. (31.2 g)
- Size: 3 x 0.9 x 0.5 in (78 x 25 x 13 mm)

U.S. Patent No. 10,019,893

Wirelessly connect to all CHAUVET DJ USB-enabled fixtures using the patent pending D-Fi USB transceiver, which eliminates the need for any DMX cables. The USB transceiver is powered directly from the fixture. Control your USB fixtures using any of our wireless controllers, or from your smartphone with the D-Fi Hub and FlareCON.



EVE P-150 UV
(page 22)



EVE P-140 VW
(page 22)



EVE P-130 RGB
(page 22)



EVE P-100 WW
(page 23)

D-Fi USB Compatible Fixtures



NEW

Pinspot Bar (page 41)



4BAR LTBT (page 35)



COLORband PiX USB (page 31)



COLORband PiX-M USB (page 31)



SlimPAR Q12 USB (page 32)



SlimPAR T12 USB (page 33)



COREpar 40 USB (page 30)



SlimPAR H6 USB (page 32)



SlimPAR Q6 USB (page 32)



SlimPAR Pro Q USB (page 25)



EVE E-100Z (page 21)



EVE E-50Z (page 21)



COREpar 80 USB (page 30)



SlimBANK T18 USB (page 32)



COREpar UV USB (page 30)



SlimPAR Pro H USB (page 25)



EVE F-50Z (page 21)



NEW



IRC-6

IRC-6 is an easy-to-use infrared remote control (IRC) for all CHAUVET DJ IRC-enabled lighting fixtures. It provides instant access to pre-programmed scenes, colour mixing options, and on-the-fly speed adjustments. This compact and lightweight remote has an approximate range of 30 feet (9 m). IRC-6 compatible fixtures also include the EZ and Freedom series fixtures and many more!

- Max. Unobstructed Distance: 4.6 m (15 ft)
- Input Voltage: 3 VDC lithium battery (CR2025)
- Weight: 20 g (0.7 oz)
- Size: 100 x 47 x 7 mm (3.9 x 1.8 x 0.3 in)

DMX-AN 2

DMX AN2 is a multi-purpose Art-Net/sACN node that converts 1 Ethernet cable to 2 DMX universes. Its optical and electrical isolation is ready for any situation and the durable Neutrik® etherCON® in/through port ensures reliability. The built-in web-based GUI means no universe/subnet setup. DMX-AN2 automatically redirects the web page if the IP address is changed. The unit supports Power over Ethernet (POE) or an external power supply. Both outputs can be set to either Art-Net or sACN and DMX-AN2 functions as an Art-Net to DMX or DMX to Art-Net interface. Onboard LED indicators quickly inform status and the integrated mounting bracket is included to quickly install into any location.

- DMX Channels: 1024
- DMX Connectors: 3- pin XLR
- Control Protocol: Art-Net, DMX, sACN
- Art-Net Version: 3
- Input Voltage (DC): 9 VDC, 500 mA (external power supply: 100 to 240 VAC, 50/60 Hz)
- Input Voltage (POE): 48V 0.4 A
- Weight: 0.2 kg (0.4 lbs)
- Size: 120 x 64 x 39 mm (4.7 x 2.5 x 1.5 in)

D-Fi Hub

D-Fi Hub is a wireless transceiver that converts D-Fi to DMX, or DMX to D-Fi. The D-Fi Hub wirelessly synchronises an unlimited number of D-Fi-ready lights and products. It turns any DMX controller into a wireless D-Fi controller, or if you already have a CHAUVET DJ D-Fi controller, save yourself the trouble of a long DMX run by placing the D-Fi Hub up in your rig. D-Fi Hub is small and lightweight and has many mounting options.

- Input Voltage: 9 VDC, 500 mA (external power supply: 100 to 240 VAC, 50/60 Hz)
- Operating Frequency: 2.412 to 2.484 GHz
- Weight: 0.6 kg (1.2 lbs)
- Size: 142 x 91 x 46 mm (5.59 x 3.58 x 1.81 in)



Obey 70

Obey 70 bridges the gap between smaller rack mount controllers and massive control desks. Fourteen reversible faders and an assignable joystick allow for easy programming of up to twelve 32-channel fixtures. Obey 70 can store up to six sets of chases containing 240 scenes on 384 total channels of control. It also features fog and strobe control, as well as MIDI compatibility.

- DMX Channels: 384
- Input Voltage: 9 VDC, 500 mA (external power supply: 100 to 240 VAC, 50/60 Hz)
- Weight: 3.3 kg (7.3 lbs)
- Size: 483 x 178 x 71 mm (19 x 7 x 2.8 in)

Data Stream 4

Data Stream 4 is a universal DMX-512 optical splitter that distributes the incoming DMX signal, in daisy chain configurations, into four separate outputs with an additional "thru" port.

- DMX Connectors: 3 and 5-pin XLR
- Rackmount: 1U
- Input Voltage: 100 to 240 VAC, 50/60 Hz (auto-ranging)
- Weight: 2.6 kg (5.8 lbs)
- Size: 483 x 134 x 46 mm (19 x 5.3 x 1.8 in)

Obey 40

Obey 40 controls up to twelve 16-channel fixtures. Obey 40 has 30 banks on eight scenes, or up to 240 scenes. It also offers fog and strobe control and MIDI compatibility.

- DMX Channels: 192
- Input Voltage: 9 VDC, 500 mA (external power supply: 100 to 240 VAC, 50/60 Hz)
- Weight: 2.6 kg (5.7 lbs)
- Size: 483 x 89 x 171 mm (19 x 3.5 x 6.7 in)

Data Stream 8

Data Stream 8 is a flexible DMX splitter designed to distribute and boost incoming DMX signals from dual inputs into 8 separate outputs via a master 3-position switch. Each input can be used simultaneously and sent to any output. Individual 2-position switches can also send data from either the A or B input separately. Each of the outputs is optically isolated from the others providing protection in the event of a short. A threaded insert allows the unit to be safely secured to trussing.

- DMX Connectors: 3-pin XLR
- Rackmount: 1U
- Input Voltage: 100 to 240 VAC, 50/60 Hz (auto-ranging)
- Weight: 2.1 kg (4.6 lbs)
- Size: 483 x 132 x 44 mm (19 x 5.2 x 1.7 in)

Portable Stands



CH-03 Tripod

- Stand Height: 2.1 to 3.7 m (7 to 12 ft)
- Bar Diameters: 38 mm (1.5 in)
- Load Capacity: 50 kg (110 lbs)
- Weight: 10.8 kg (24 lbs)



CH-06 Tripod

- Stand Height: 2.7 m (9 ft) fully extended
- Bar Diameter: 22 mm (0.86 in)
- Load Capacity: 22 kg (50 lbs)
- Weight: 5 kg (11 lbs)

Clamps



CLP-03

Load Capacity:
18 kg (39 lbs)



CLP-06

Load Capacity:
102 kg (224 lbs)



CLP-10

Load Capacity:
24 kg (52 lbs)



CLP-15

Load Capacity:
295 kg (660 lbs)



CLP-15N

Load Capacity:
110 kg (243 lbs)



CLP-35HC

Load Capacity:
76 kg (168 lbs)

Cables



3-Pin DMX Cable

- Available Lengths:
1.5 m (5 ft)
3 m (10 ft)
7.6 m (25 ft)
15 m (50 ft)



DMX3F5M

- 3-pin (F) to 5-pin (M)
DMX converter
- Length: 154 mm (6 in)



DMX5F3M

- 5-pin (F) to 3-pin (M)
DMX converter
- Length: 154 mm (6 in)



NEUTRIK® powerCON®

- Available Lengths:
45.7 cm (18 in)
1.5 m (5 ft)
3 m (10 ft)
7.6 m (25 ft)
15 m (50 ft)



CH-05

Load Capacity:
30 kg (68 lbs)



PLIEC LINKING CABLE

- Male-to-female IEC extension cable
- Available Lengths:
1.5 m (5 ft)
7.6 m (25 ft)



NEUTRIK® etherCON®

- Available Lengths:
45.7 cm (18 in)
1.5 m (5 ft)
3 m (10 ft)
7.6 m (25 ft)
15 m (50 ft)
30.4 m (100 ft)

CHAUVET 3

VIP Gear Bags



VIP Gear Bag CHS-40

Fits:
 Rotosphere Q3
 Intimidator Scan 305 IRC
 Kinta FX
 Mini Kinta
 Swarm 5 FX
 Swarm Wash FX
 Wash FX 2
 And More!



VIP Gear Bag CHS-2XX

Fits:
 Intimidator Spot 260



VIP Gear Bag CHS-30

Fits:
 COREpar 80 USB
 COREpar 40 USB
 SlimPAR Pro H USB
 SlimPAR Pro Q USB
 SlimPAR H6 USB
 SlimPAR Q6 USB
 SlimPAR Q12 USB
 SlimPAR T6 USB
 SlimPAR T12 USB
 COREpar UV USB
 And More!



VIP Gear Bag CHS-FR4

Fits:
 Freedom Par Hex-4
 Freedom Par Tri-6
 Freedom Par Quad-4 IP



VIP Gear Bag CHS-60

Fits:
 COLORband PiX USB
 COLORband PiX-M USB
 And More!

“The CHAUVET name and logo and the other brands and trademarks in this catalog, including, but not limited to, CHAUVET DJ, VIVID, INTIMIDATOR, FREEDOM, EVE, SLIMPAR, SLIMPANEL, COLORBAND, COREPAR, BTAIR, EZLINK, D-FI, D-FI USB, GIGBAR, HURRICANE, GEYSER, NIMBUS, CUMULUS, FUNFETTI, SCORPION, SWARM, ROTOSPHERE, LINE DANCER, KINTA, ABYSS, FLARECON, OBEY and FOOT-C are registered trademarks or trademarks owned by CHAUVET in the U.S. and other countries and may not be used by a third party for any purpose without the prior written consent of CHAUVET.”

For complete specifications, visit ChauvetDJ.eu | All products meet CSA and CE standards. Specifications subject to change without notice.



ChauvetDJ.eu



Global Headquarters
5200 NW 108th Avenue
Sunrise, FL 33351 USA

Las Vegas Branch
3325 W Sunset Rd.
Suite I
Las Vegas, NV 89118 USA

Chauvet México
Av. de las Partidas 34 – 3B
Zona Industrial Lerma
Lerma, Estado de México, CP 52000

Chauvet Belgium
Stokstraat 18,
9770 Kruisem, Belgium

Chauvet UK
Brookhill Road Industrial Estate
Pinxton, Nottingham NG16 6NT, United Kingdom

Chauvet Germany
Bruno-Bürgel-Str. 11
28759 Bremen, Germany

Chauvet France
3, Rue Ampère
91380 Chilly-Mazarin, France

Copyright 2020 Chauvet & Sons, LLC.

"The CHAUVET name and logo and the other brands and trademarks in this catalog, including, but not limited to, CHAUVET DJ, VIVID, INTIMIDATOR, FREEDOM, EVE, SLIMPAR, SLIMPANEL, COLORBAND, COREPAR, BTAIR, EZLINK, D-FI, D-FI USB, GIGBAR, HURRICANE, GEYSER, NIMBUS, CUMULUS, FUNFETTI, SCORPION, SWARM, ROTOSPHERE, LINE DANCER, KINTA, ABYSS, FLARECON, OBEY and FOOT-C are registered trademarks or trademarks owned by CHAUVET in the U.S. and other countries and may not be used by a third party for any purpose without the prior written consent of CHAUVET."

For complete specifications, visit ChauvetDJ.eu | All products meet CSA and CE standards. Specifications subject to change without notice.