

production

# power

CHAUVETDJ.eu

CHAUVET **3**



# move

The CHAUVET DJ line of Intimidator moving head fixtures are a powerful lighting addition to any large scale event production. Depending on which fixture is in your arsenal, a dynamic combination of bright LEDs, gobo and prism effects, zoom capability and more are at your service to bring your large scale events to life.

## movingheads



### Intimidator Spot 375Z IRC

**DMX Channels:** 9 or 15  
**Light Source:** 1 LED (white) 150 W, (12.3 A), 50,000 hours  
**Zoom Angle (motorized):** 10° to 23°  
**Gobos:** 7 + open (6 aluminum + 1 glass), rotating, interchangeable, indexing, slot-n-lock, continuous scroll at variable speeds  
**Gobo Size:** 24 mm outside, 20 mm image, 1 mm max thickness  
**Colors:** 7 + white, split colors, continuous scroll at variable speeds  
**Illuminance (10°):** 38,000 lux @ 2 m  
**Illuminance (23°):** 19,850 lux @ 2 m  
**Input Voltage:** 100 to 240 VAC, 50/60 Hz (auto-ranging)  
**Weight:** 12.4 kg  
**Size:** 220 x 322 x 466 mm



### Intimidator Trio

**DMX Channels:** 15 or 30  
**Light Source:** 6 LEDs (quad-color RGBW) 21 W (6.3 A), 50,000 hours  
**Zoom Angle (motorized):** 7° to 53°  
**Illuminance (7°):** 16,000 lux @ 2 m  
**Illuminance (53°):** 1,350 lux @ 2 m  
**Input Voltage:** 100 to 240 VAC, 50/60 Hz (auto-ranging)  
**Weight:** 9.2 kg  
**Size:** 278 x 278 x 386 mm



### Intimidator Spot 355 IRC

**DMX Channels:** 8 or 14DMX  
**Light Source:** 1 LED (white) 90 W (24.2 A), 50,000 hours life expectancy  
**Zoom Angle:** (manual): 12° to 17°  
**Gobos:** 7 + open (5 metal + 2 glass), rotating, interchangeable, continuous scroll at variable speeds  
**Gobo Size:** 24 mm outside, 20 mm image, 1.1 mm max thickness  
**Colors:** 8 + white, split colors, continuous scroll at variable speeds  
**Illuminance:** (12°): 21,810 lux @ 2 m (17°): 9,400 lux @ 2 m  
**Input Voltage:** 100 to 240 VAC, 50/60 Hz (auto-ranging)  
**Weight:** 11.2 kg  
**Size:** 268 x 340 x 392 mm



# move

Morph from SPOT to BEAM to WASH effortlessly with the Intimidator Hybrid 140SR or project crisp beams and gobos at almost any distance with the Intimidator Beam 140SR

## movingheads



### Intimidator Hybrid 140SR

**DMX Channels:** 13 or 19  
**Light Source (included):** Osram Sirius HRI 140 W discharge lamp, 6,000 hours  
**Zoom Angle Motorized (beam):** 3° to 11° (spot): 7° to 21° (wash): 14° to 28°  
**Gobo wheel (1):** 9 + open, rotating, interchangeable, slot-n-lock, continuous scroll at variable speeds  
**Gobo wheel (2):** 17 + open, metal, continuous scroll at variable speeds  
**Colors:** 12 + white, split colors, continuous scroll at variable speeds  
**Illuminance (3° beam):** 382,000 lux @ 5 m  
**Illuminance (7° spot):** 104,700 lux @ 5 m  
**Illuminance (14° wash):** 4,680 lux @ 5 m  
**Input Voltage:** 100 to 240 VAC, 50/60 Hz (auto-ranging)  
**Weight:** 15.2 kg  
**Size:** 322 x 220 x 513 mm



### Intimidator Beam 140SR

**DMX Channels:** 9 or 15  
**Light Source (included):** Osram Sirius HRI 140W discharge lamp, 6,000 hours  
**Beam Angle (beam):** 3°  
**Beam Angle (frost):** 21°  
**Gobos:** 17 + open (all Aluminum), Fixed, continuous scroll at variable speeds  
**Colors:** 14 + white, split colors, continuous scroll at variable speeds  
**Illuminance:** 382,000 lux @ 5 m  
**Illuminance:** 37,900 lux @ 15 m  
**Input Voltage:** 100 to 240 VAC, 50/60 Hz (auto-ranging)  
**Weight:** 11.7 kg  
**Size:** 322 x 220 x 420 mm



# Wash

CHAUVET DJ SlimPAR Pro wash lights provide a bright, powerful punch for maximum event lighting impact and can wash any stage or event space with warm, rich and vibrant colors. With the new addition of D-Fi USB compatibility, SlimPAR Pro fixtures are equipped with wireless DMX capability taking creative lighting flexibility to new heights.

## washlights

245° Rotating LED Strip Light



### COLORband PiX-M USB

**DMX Channels:** 5, 6, 8, 10, 17, 32 or 36  
**Tilt:** 245°  
**Light Source:** 10 LEDs (tri-color RGB) 9 W, (2A), 50,000 hours  
**Beam Angle:** 20°  
**Illuminance:** 6,120 lux @ 2 m  
**Input Voltage:** 100 to 240 VAC, 50/60 Hz (auto-ranging)  
**Weight:** 4.4 kg  
**Size:** 785 x 67 x 123 mm



### SlimPAR Pro H USB

**DMX Channels:** 6, 7 or 12  
**Light Source:** 12 LEDs (hex-color RGBAW+UV) 10 W (2.4 A), 50,000 hours  
**Beam Angle:** 24°  
**Illuminance:** 3,218 lux @ 2 m  
**Input Voltage:** 100 to 240 VAC, 50/60 Hz (auto-ranging)  
**Weight:** 3.3 kg  
**Size:** 253 x 98 x 290 mm



### SlimPAR Pro Q USB

**DMX Channels:** 4, 5 or 10  
**Light Source:** 12 LEDs (quad-color RGBA) 6 W (2 A), 50,000 hours  
**Beam Angle:** 16°  
**Illuminance:** 5,690 lux @ 2 m  
**Input Voltage:** 100 to 240 VAC, 50/60 Hz (auto-ranging)  
**Weight:** 3.3 kg  
**Size:** 253 x 98 x 290 mm



### SlimPAR Pro W USB

**DMX Channels:** 3, 4 or 9  
**Light Source:** 12 LEDs (tri-color CW, WW, A) 6 W (1.4 A), 50,000 hours  
**Color Temperature Range:** 1700 to 6300 K  
**Beam Angle:** 17°  
**Illuminance:** 3,097 lux @ 2 m  
**Input Voltage:** 100 to 240 VAC, 50/60 Hz (auto-ranging)  
**Weight:** 3.2 kg  
**Size:** 253 x 98 x 290 mm



# spot

CHAUVET DJ spotlight fixtures are versatile and powerful featuring hard focus, soft washes and crisp, bright beams, to project from distances near or far.

# spotlights



## LED Followspot 120ST

**DMX Channels:** 3  
**Light Source:** 1 LED (cool white) 120 W (30.6A), 50,000 hours  
**Zoom Angle:** (manual): 14° to 20°  
**Illuminance:** (14°): 16,060 lux @ 2 m  
**Illuminance:** (20°): 7,900 lux @ 2 m  
**Input Voltage:** 100 to 240 VAC, 50/60 Hz (auto-ranging)  
**Weight:** 16.6 lb (7.5 kg)  
**Size:** 582 x 279 x 341 mm



Uses glass gobos to create incredible gobo or pattern details.



## EVE E-100Z

**DMX Channels:** 1 or 3  
**Light Source:** 1 LED (warm white) 100 W (2.3 A), 50,000 hours  
**Color Temperature:** 3500 K  
**Gobo Size:** M 66 mm outside, 48 mm image, 2 mm max thickness  
**Zoom Angle (manual):** 14° to 30°  
**Illuminance (14°):** 15,100 lux @ 2 m  
**Illuminance (30°):** 3,800 lux @ 2 m  
**Input Voltage:** 100 to 240 VAC, 50/60 Hz (auto-ranging)  
**Weight:** 5.7 kg  
**Size:** 611 x 183 x 430 mm



# haze

CHAUVET DJ has a variety of haze machines, fog machines and atmospheric effects with a full array of powerful production features to meet any event effect needs.

## haze & fog machines

### Atmospheric Fluids



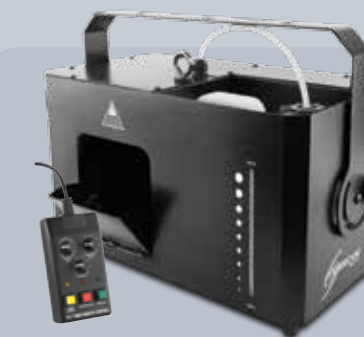
**GJ5**  
Quick Dissipating Fluid



**HJ5**  
High Performance Haze Fluid



**FJ5**  
High Density Fog Fluid



### Hurricane Haze 4D

**DMX Channels:** 2  
**Tank Capacity:** 0.9 gal (3.75 l)  
**Input Voltage:** 120 VAC, 60 Hz or 230 VAC, 50 Hz  
**Output:** 4,300 cfm  
**Weight:** 6 kg  
**Size:** 277 x 396 x 245 mm



### Hurricane 1600

**DMX Channels:** 1  
**Tank Capacity:** 0.63 gal (2.4 l)  
**Input Voltage:** 120 VAC, 60 Hz or 230 V, 50 Hz  
**Output:** 25,000 cfm  
**Weight:** 6 kg  
**Size:** 348 x 312 x 253 mm





# Fog

Create a white fog that hugs the floor and dissipates without rising or blast a dynamic and safe pyrotechnic-like effect without the use of any toxic chemicals.

## haze & fog machines



### Nimbus

**Tank Capacity:** 4.5 gal (17 l)  
**Heat-up time:** (single element): 50 min  
**Heat-up time:** (dual element): 30 min  
**Reheat time:** (single element): 30 min  
**Reheat time:** (dual element): 15 min  
**Average runtime:** 6 min  
**Input Voltage:** 120 VAC, 60 Hz or 230 VAC, 50 Hz  
**Dry ice capacity:** 10 lb (4.5 kg)  
**Weight (full):** 34 kg  
**Size:** 513 x 465 x 470 mm



### Geyser P6

**DMX Channels:** 10  
**Output:** 17,000 cfm  
**Light Source:** 6 LEDs (penta-color RGBA+UV) 7 W (2.5 A), 50,000 hours  
**Tank Capacity:** 0.6 gal (2.5 l)  
**Input Voltage:** 120 VAC, 60 Hz or 230 VAC, 50 Hz  
**Weight:** 8.8 kg  
**Size:** 442 x 310 x 175 mm



# freedom

CHAUVET DJ's battery-powered Freedom series fixtures are 100% wireless D-Fi transceiver technology. Bright, dynamic light with a variety of LED color combinations for unlimited color mixing anywhere you need it.

## batterypowered



FC

### Freedom Par Hex-4

**DMX Channels:** 6, 8, or 12  
**Light Source:** 4 LEDs (hex-color RGBAW+UV) 10 W (2 A), 50,000 hours  
**Beam Angle:** 23°  
**Maximum Run Time:** (all on): up to 8 hours  
**Illuminance:** 1,372 lux @ 2 m  
**Input Voltage:** 100 to 240 VAC, 50/60 Hz (auto-ranging)  
**Weight:** 2.9 kg  
**Size:** 138 x 145 x 184 mm



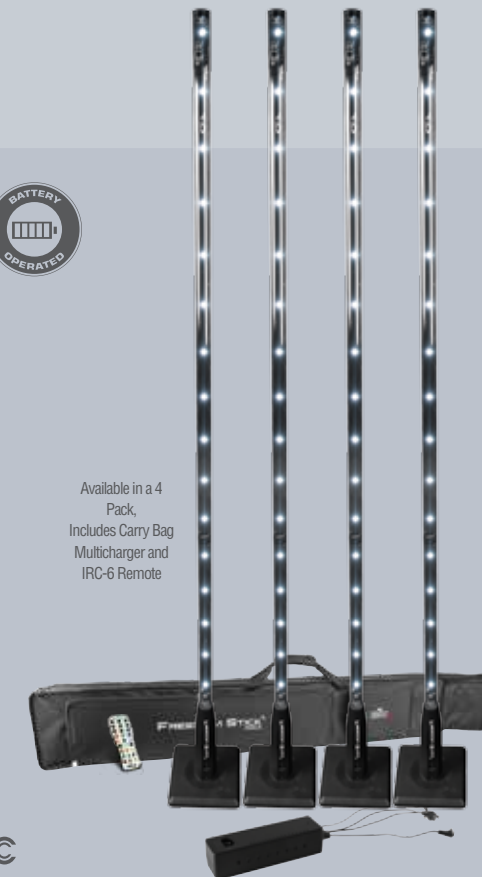
FC

### Freedom Par Quad-4

**DMX Channels:** 4, 6 or 10  
**Light Source:** 4 LEDs (quad-color RGBA) 5 W (2 A), 50,000 hours  
**Beam Angle:** 15°  
**Maximum Run Time:** (all on): up to 8 hours  
**Illuminance:** 2,300 lux @ 2 m  
**Input Voltage:** 100 to 240 VAC, 50/60 Hz (auto-ranging)  
**Weight:** 2.8 kg  
**Size:** 138 x 145 x 184 mm



Available in a 4 Pack, Includes Carry Bag, Multicharger and IRC-6 Remote

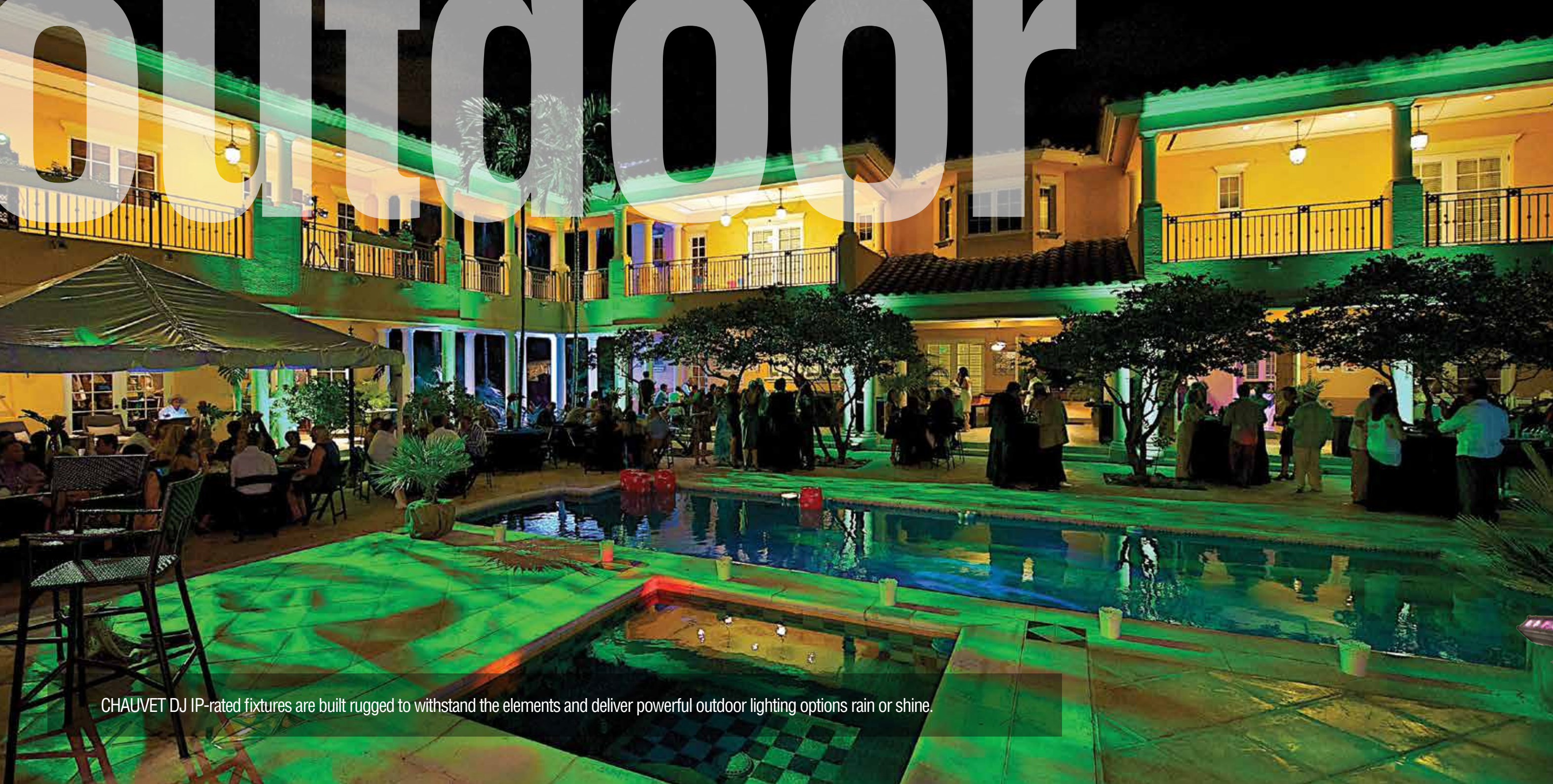


FC

### Freedom Stick Pack

**DMX Channels:** 3, 8, 48 or 50  
**Light Source:** 32 SMD LEDs (tri-color RGB) 0.2 W (50 mA), 50,000 hours  
**Coverage Angle:** 360°  
**Maximum Run Time:** (all on): up to 8 hours  
**Weight:** 7.5 kg  
**Size:** 1535 x 65 x 220 mm





CHAUVET DJ IP-rated fixtures are built rugged to withstand the elements and deliver powerful outdoor lighting options rain or shine.

# outdoor fixtures



## Festoon

**DMX Channels:** 3, 8, 9, 60, 120 or 180  
**Light Source:** 6 SMD LED's (tri-color RGB) (50 mA) per bulb, 50,000 hours  
**Input Voltage:** 100 to 240 VAC, 50/60 Hz (auto-ranging)  
**IP Rating:** IP43  
**Weight:** (Controller): 4.8 kg  
**Size:** (String): 15000 x 60 x 133 mm (Controller): 190 x 213 x 48.7 mm



## Freedom Par Quad-4 IP

**DMX Channels:** 4, 6 or 10  
**Light Source:** 4 LEDs (quad-color RGBA) 5 W, (2 A), 50,000 hours  
**Beam Angle:** 15°  
**Illuminance:** 2,464 lux @ 2 m  
**IP Rating:** IP54  
**Input Voltage:** 100 to 240 VAC, 50/60 Hz (auto-ranging)  
**Weight:** 3.6 kg  
**Size:** 145 x 138 x 191 mm



## COLORband PiX IP

**DMX Channels:** 3, 4, 6, 7, 9, 12, 18 or 36  
**Light Source:** 12 LEDs (tri-color RGB) 3 W (1,050 mA), 50,000 hours  
**Beam Angle:** 20°  
**Illuminance:** 2,325 lux @ 2 m  
**P Rating:** IP65  
**Input Voltage:** 100 to 240 VAC, 50/60 Hz (auto-ranging)  
**Weight:** 6.1 kg  
**Size:** 993 x 100 x 173 mm





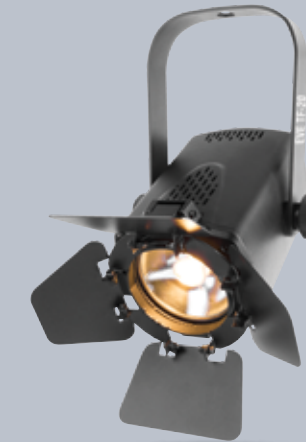
A new day of production lighting power. Stage-Ready fixtures produce powerful warm spots and washes to highlight the action.

# EVEseries



## EVE F-50Z

**DMX Channels:** 1 or 3  
**Light Source:** 1 LED (warm white)  
50 W, (1.3 A), 50,000 hours  
**Color Temperature:** 3500 K  
**Zoom Angle:** (manual): 17° to 50°  
**Illuminance:** (17°): 4,780 lux @ 2 m  
**Illuminance:** (50°): 998 lux @ 2 m  
**Input Voltage:** 100 to 240 VAC, 50/60 Hz (auto-ranging)  
**Weight:** 3.9 kg  
**Size:** 281 x 212 x 328 mm



## EVE TF-20

**Light Source:** 1 LED (warm white COB)  
20 W, (0.5 A), 50,000 hours  
**Color Temperature:** 2700 K  
**Beam Angle:** 24°  
**Illuminance:** 1,506 lux @ 2 m  
**Input Voltage:** 85 to 120 VAC, 50/60 Hz (auto-ranging)  
**Weight:** 1.2 kg  
**Size:** 153.5 x 140 x 184 mm



## EVE E-100Z

**DMX Channels:** 1 or 3  
**Light Source:** 1 LED (warm white)  
100 W (2.3 A), 50,000 hours  
**Color Temperature:** 3500 K  
**Gobo Size:** M (66 mm outside, 48 mm image, 2 mm max thickness)  
**Zoom Angle:** (manual): 14° to 30°  
**Illuminance:** (14°): 15,100 lux @ 2 m  
**Illuminance:** (30°): 3,800 lux @ 2 m  
**Input Voltage:** 100 to 240 VAC, 50/60 Hz (auto-ranging)  
**Weight:** 5.7 kg  
**Size:** 611 x 183 x 430 mm



## EVE E-50Z

**DMX Channels:** 1 or 3  
**Light Source:** 1 LED (warm white)  
50 W, (1.3 A), 50,000 hours  
**Color Temperature:** 3500 K  
**Gobo Size:** D (53.3 mm outside, 43 mm image, 2 mm max thickness)  
**Zoom Angle:** (manual): 20° to 39°  
**Illuminance:** (20°): 7,910 lux narrow @ 2 m  
**Illuminance:** (39°): 2,710 lux wide @ 2 m  
**Input Voltage:** 100 to 240 VAC, 50/60 Hz (auto-ranging)  
**Weight:** 4.2 kg  
**Size:** 480 x 157 x 381 mm  
**CRI:** 81





---

**Global Headquarters**

5200 N.W. 108th Avenue  
Sunrise, FL 33351  
USA

**California Branch**

7555 N San Fernando Road  
Burbank, CA 91505  
USA

**UK Branch**

Unit 1C Brookhill Road  
Industrial Estate Pixton,  
Nottingham NG16 6NT  
United Kingdom

**Belgium Branch**

Stokstraat 18  
9770 Kruishoutem  
Belgium

**Mexico Branch**

Av. de las Partidas 34, 3-B  
(entrada por Calle 2)  
Zona Industrial Lerma Lerma,  
México, C.P. 52000