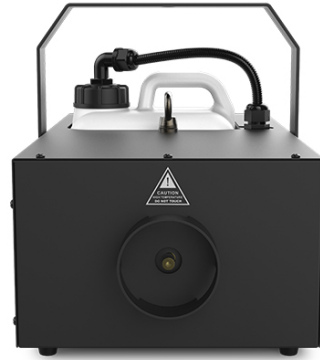


Hurricane 2000

HIGHLIGHTS

- Professional, high volume fog machine produces a thick plume on demand
- PowerCON®-compatible power input connection
- 3- and 5-pin DMX input/output connections for a quick setup
- Always-ready technology provides continuous output
- Built-in timer provides hands-free, automated operation
- Advanced fluid sensor with automatic shut-off prevents overheating
- Variable output control from on-board LCD display or DMX
- Strong, sturdy housing for reliability in all production types



SPECIFICATIONS

- DMX Channels : 1
- DMX Connectors : 3- and 5-pin XLR
- Heat-Up Time : 3 min
- Reheat Time : 20 seconds
- Input Voltage : 120 VAC, 60 Hz or 230 VAC, 50 Hz
- Power and Current : 1230 W, 10.3 A @ 120 V, 60 Hz
1350 W, 6 A @ 230 V, 50 Hz
- Weight : 13.6 lb (6.2 kg)
- Size : 19 x 11.6 x 9.3 in (487 x 297 x 236 mm)
- Approvals : CE
- Tank Capacity : 1 gal (3 l)
- Output : 30,000 cfm
- Fluid Consumption : 48.6 ml/min
- Optional Controller : FC-W, WMS, FC-T
- Compatible Fluids : HFG, HDF

WHAT'S INCLUDED

- Hurricane 2000
- Power cord