



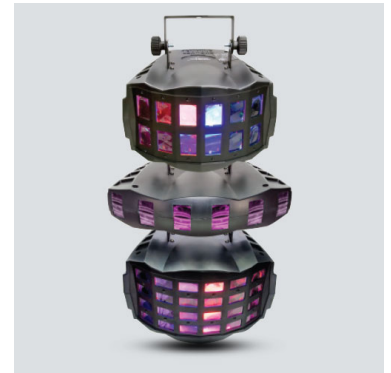
## Derby X

The Derby X is a DMX-512 LED derby effect light, featuring individual control of all 6 LED clusters. Additional features include blackout/static/strobe, built-in automated and sound activated programs, and linkable power for up to 27 units.



# Highlights

- LED derby effect light spreads multicolored, chasing beams throughout the room
- Enhance light shows with blackout, static and strobe effects
- Increase flexibility with individual control of red, green and blue LEDs within each of the 6 clusters
- Activate built-in automated programs in DMX mode
- Easily access built-in, sound-activated programs in master/slave or DMX mode
- Combine multiple units together using the included, adjustable X bracket
- Fits best in the CHS-40 VIP Gear Bag



Combine multiple units together using X bracket

## Specifications

- DMX Channels: 8
- DMX Connectors: 3-pin XLR
- Light Source: 90 LEDs (30 red, 30 green, 30 blue) 0.25 W (20 mA), 100,000 hours life expectancy
- Power Linking: 27 units @ 120 V; 52 units @ 230 V
- Input Voltage: 100 to 240 VAC, 50/60 Hz (auto-ranging)
- Power and Current: 24 W, 0.2 A @ 120 V, 60 Hz  
24 W, 0.1 A @ 230 V, 50 Hz
- Weight: 4 lb (1.8 kg)
- Size: 11.9 x 15 x 7.4 in (302 x 382 x 187 mm)
- Approvals: CE

## What's Included

- Power cord
- X Bracket
- Warranty card